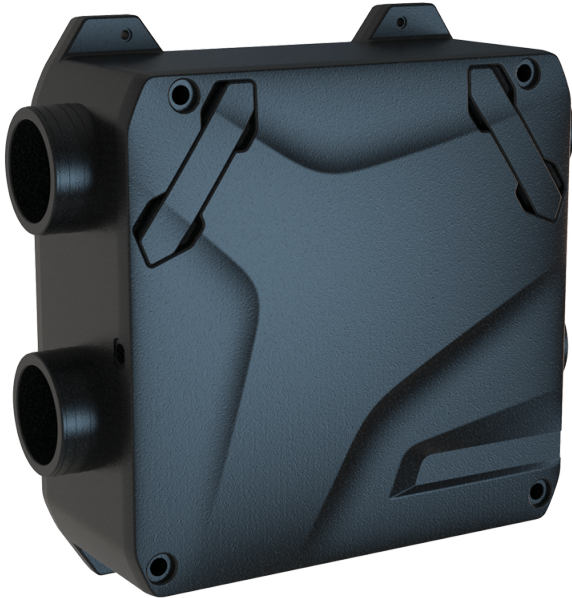



Series **Enave-C 100 P** **A14**



Heat recovery air handling units in sound- and heat-insulated casings

- Heat exchanger type: Counter flow
- Sound insulation
- Motor type: EC
- Control: Remote Control
- Casing material: EPP
- Humidity sensor: Optional

| Lineup | Connected air duct size, mm | Rated power, W | Maximum airflow, m ³ /h | Service side | Control system |
|---|-----------------------------|----------------|------------------------------------|--------------|----------------|
|  Enave-C 100 P A14 | 100/125 | 45 | 130 | Universal | A14 |