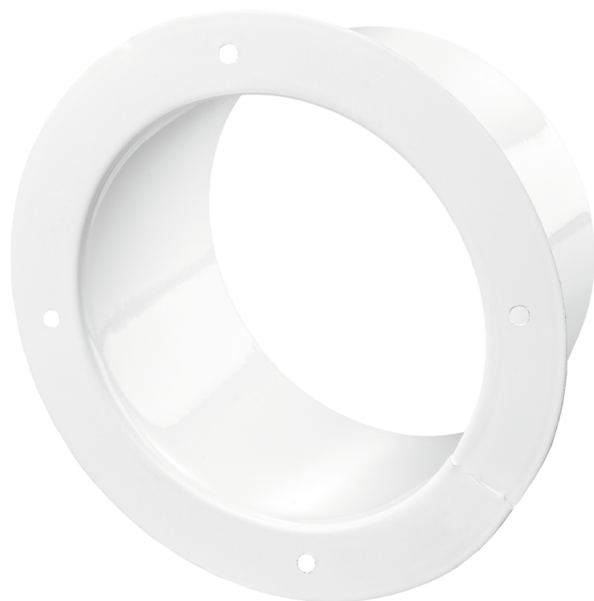









Series **FM**



Flanges made of special steel with polymeric coating for connection of flexible and plastic air ducts of the respective diameter

- Casing material: Coated steel

Lineup	
	FM 80
	FM 100
	FM 110
	FM 120
	FM 125
	FM 130
	FM 140



FM 150



FM 160



FM 180



FM 200



FM 250



FM 315