








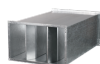
Series **SR (rectangular)**

The plate silencer is applied for noise absorption produced during the ventilating equipment operation and spread along the ducting systems

- Casing material: Galvanized steel



Lineup	
	SR 400x200
	SR 500x250
	SR 500x300
	SR 600x300
	SR 600x350
	SR 700x400
	SR 800x500



SR 900x500



SR 1000x500