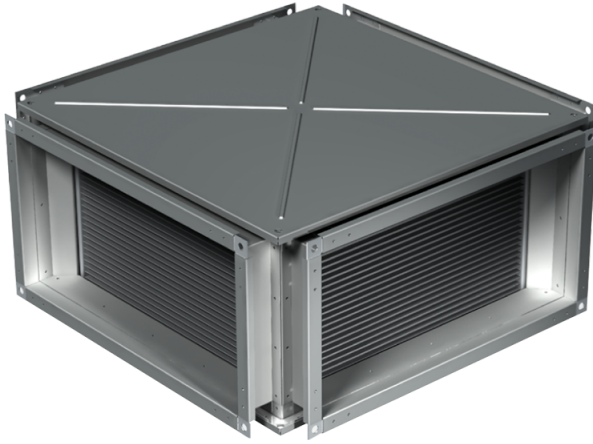
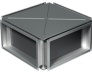








Series **PR (rectangular)**

Der Plattenwärmetauscher mit dem Kreuz-Luftstrom ist zur Rückgewinnung der Abluftwärme in den Lüftungs- und Klimaanlage bestimmt

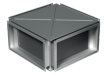
- Gehäusematerial: Galvanized steel



Lineup	
	PR 400x200
	PR 500x250
	PR 500x300
	PR 600x300
	PR 600x350
	PR 700x400
	PR 800x500



PR 900x500



PR 1000x500