








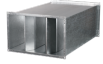
Series **SR (rectangular)**

Plattenschalldämpfer zum Einbau in rechteckige Kanäle

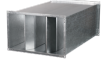
- Gehäusematerial: Verzinkter Stahl



Lineup	
	SR 400x200
	SR 500x250
	SR 500x300
	SR 600x300
	SR 600x350
	SR 700x400
	SR 800x500



SR 900x500



SR 1000x500