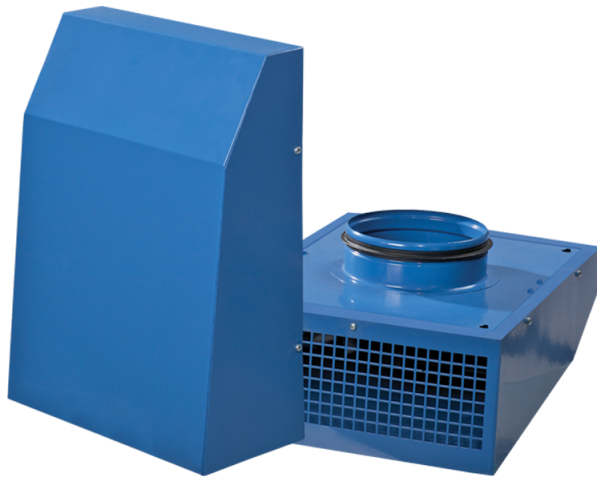



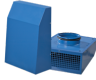
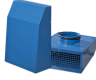
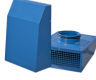


Series **VCN EC**



Abluft-Radialventilatoren im Stahlgehäuse für Außenwandmontage

- Motortyp: EC
- Laufradtyp: Centrifugal backward curved blades
- Gehäusematerial: Coated steel

Lineup	Luftkanalgröße, mm	Leistung, W	Max. Förderleistung, m ³ /h
 VCN 100 EC	100	89	313
 VCN 125 EC	125	103	480
 VCN 150 EC	150	92	550
 VCN 160 EC	160	92	585
 VCN 200 EC	200	79	535
 VCN 200 EC S	200	102	755