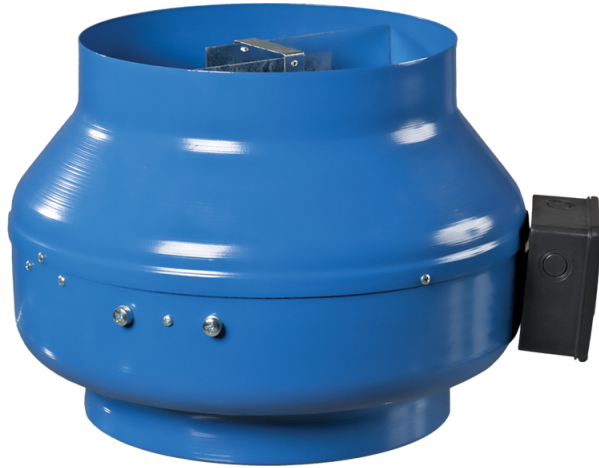










Series VKM

Radiale Rohrventilatoren im Stahlgehäuse

- Motortyp: AC
- Laufradtyp: Centrifugal backward curved blades
- Gehäusematerial: Coated steel



Lineup	Luftkanalgröße, mm	Leistung, W	Max. Förderleistung, m ³ /h
 VKM 100	100	60	279
 VKM 100 Q	100	45	233
 VKM 125	125	64	360
 VKM 125 Q	125	47	326
 VKM 150	150	100	580
 VKM 160	160	99	567
 VKM 200	200	135	1070

 VKM 250	250	194	1420
 VKM 250 E	250	95	900
 VKM 315	315	171	1440
 VKM 355 Q	355	233	2250
 VKM 400	400	460	3090
 VKM 450	450	665	5300
 VKMS 150	150	127	710
 VKMS 160	160	121	690
 VKMS 200	200	193	1150
 VKMS 315	315	295	1920