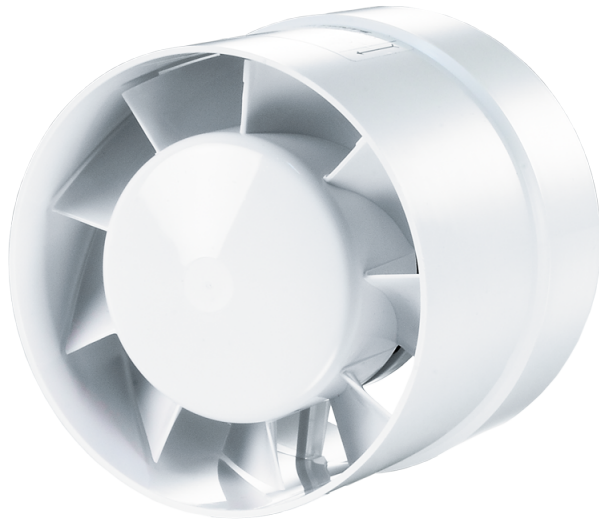









Series **VKO**

Axiale Rohrventilatoren zur Be- und Entlüftung

- Motortyp: AC



Lineup	Luftkanalgröße, mm	Leistung, W	Max. Förderleistung, m ³ /h
 100 VKO	100	14	105
 100 VKO 12	100	14	92
 100 VKO press	100	16	106
 100 VKO turbo	100	16	135
 100 VKOk	100	14	105
 100 VKOk 12	100	14	92
 100 VKOk turbo	100	16	135

 125 VKO	125	16	185
 125 VKO 12	125	16	165
 125 VKO L turbo	125	24	243
 125 VKO press	125	24	192
 125 VKO turbo	125	24	243
 125 VKOk	125	16	185
 125 VKOk press	125	24	192
 125 VKOk turbo	125	24	243
 150 VKO	150	24	298
 150 VKO 12	150	29	266
 150 VKO press	150	29	312
 150 VKO turbo	150	29	358
 150 VKOk	150	24	298
 150 VKOk 12	150	29	266

 150 VKOk press	150	29	312
 150 VKOk turbo	150	29	358
 100 VKO L	100	14	105
 100 VKO L turbo	100	16	135
 100 VKOk L	100	14	105
 100 VKOk L turbo	100	16	135
 125 VKO L	125	16	185
 125 VKOk L	125	16	185
 150 VKO L	150	24	298
 150 VKO L turbo	150	29	358
 150 VKOk L	150	24	298
 150 VKOk L turbo	150	29	358