

C Series



CB Series



CBR Series



Application

The clamps are designed for quick and reliable mounting and connection of various round ventilation system components. The clamps facilitate installation process and fan removal for servicing and maintenance.

Design

• C series clamps are made of stainless steel band and CZ series clamps are made of galvanized steel band. The clamps are tightened with a screw.

• CB series clamps are the stainless steel quick-release clamps equipped with a stainless steel swing screw. The clamps are tightened with a screw.

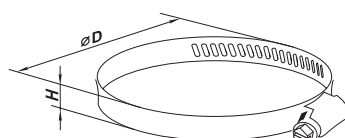
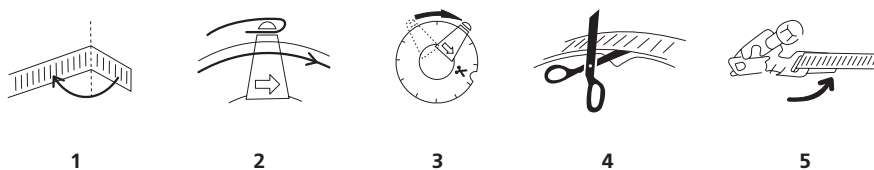
• The CBR 3000 model is a band clamp in plastic casing (roll 30 m x 9 mm x 0.8 mm + 50 locking devices SU 50). Get the required clamp diameter with a clamp band of respective length and a locking device. The clamps are tightened with a screw. Snip cutters are everything you need to get the required clamp diameter as the plastic casing has a special design and necessary marking.

Use:

1. Bend the edge of the band;
2. Fix the bent end inside the band holder;
3. Turn the band holder up to the required diameter marking on the casing;
4. Cut the band according to the marking on the casing;
5. Fix the locking device on the band clamp.

Overall dimensions

Model	Dimensions [mm]	
	ØD	H
C 100	90-110	9
C 125	110-130	9
C 150	140-160	9
C 160	150-170	9
C 200	190-210	9
C 250	240-260	9
C 315	300-330	9



Overall dimensions

Model	Dimensions [mm]	
	ØD	H
CB 60-110	60-110	9
CB 60-135	60-135	9
CB 60-165	60-165	9



Locking device SU 50 for CBR 3000



Easy locking mechanism for the CB and CBR clamps