



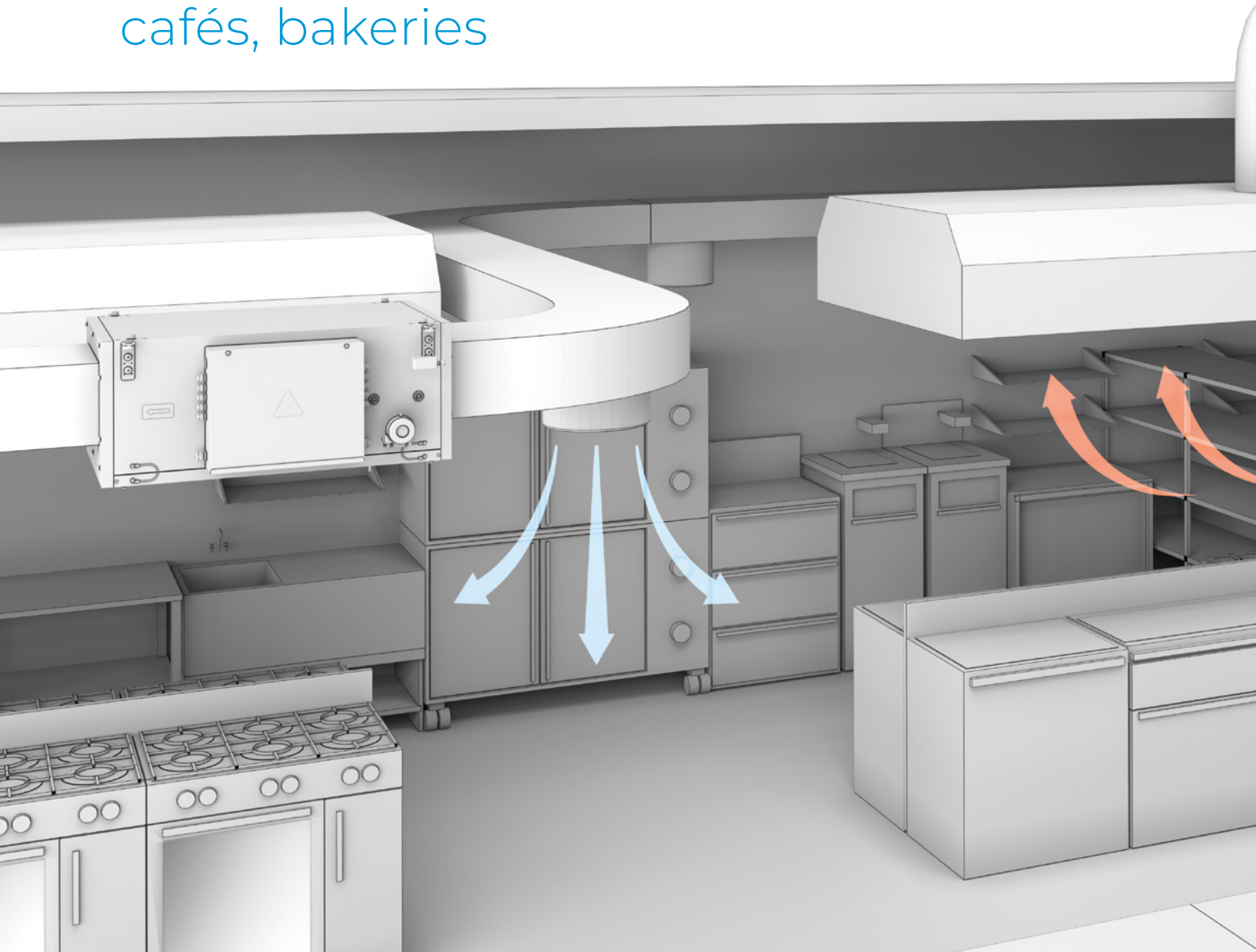
KITCHEN VENTILATION

2024



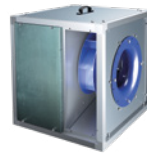
OPTIMAL SOLUTIONS

for industrial kitchens, restaurants,
cafés, bakeries





01. EXHAUST KITCHEN FANS: TEMPERATURE UP TO 120 °C



VSK 6



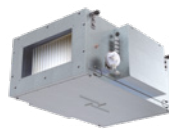
KSK 10

02. EXHAUST SMOKE EXTRACT FANS: TEMPERATURE UP TO +400 °C (2 HOURS)



VKPD 14

03. SUPPLY UNITS AND FANS



MPA EC 18



BOOST 20



BOOST-I 20



VKM 20



VKP 20



VKPI 20

01. EXHAUST KITCHEN FANS:

temperature
up to 120 °C

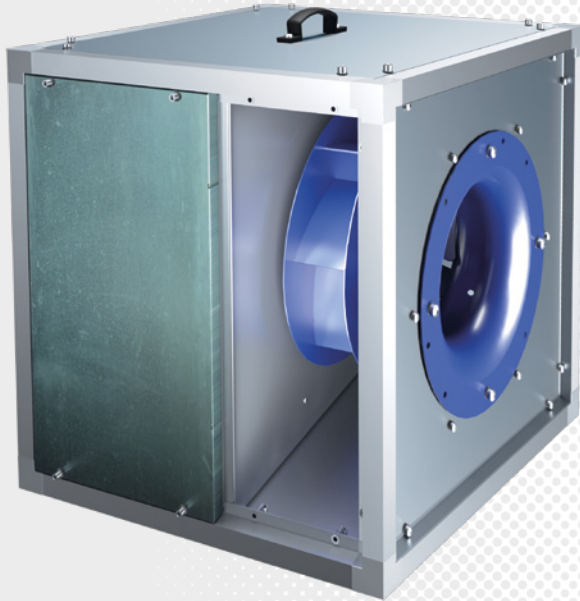




EXHAUST KITCHEN FANS: TEMPERATURE UP TO 120 °C



VENTS VSK



AC: air flow
up to 21 860 m³/h



Temperature
up to 120 °C
(continuous
operation)



EC: air flow
up to 27 500 m³/h



AC motors,
EC motors

APPLICATION

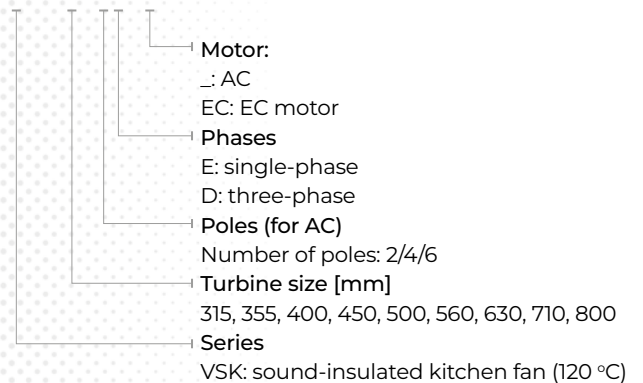
Designed to extract contaminated hot air, containing grease (when using grease filters), in conditions requiring high durability

Perfectly function in various ventilation systems for:

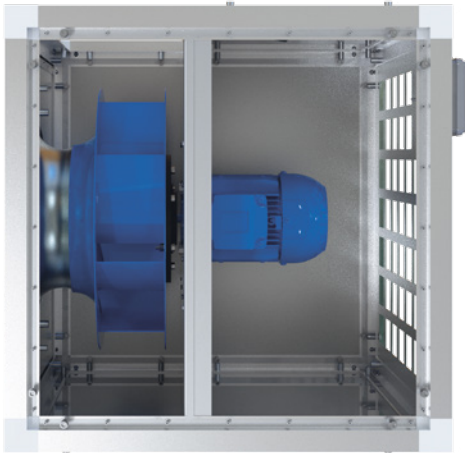
- restaurant or café kitchens
- industrial bakeries

DESIGNATION KEY

VSK 315 4E EC



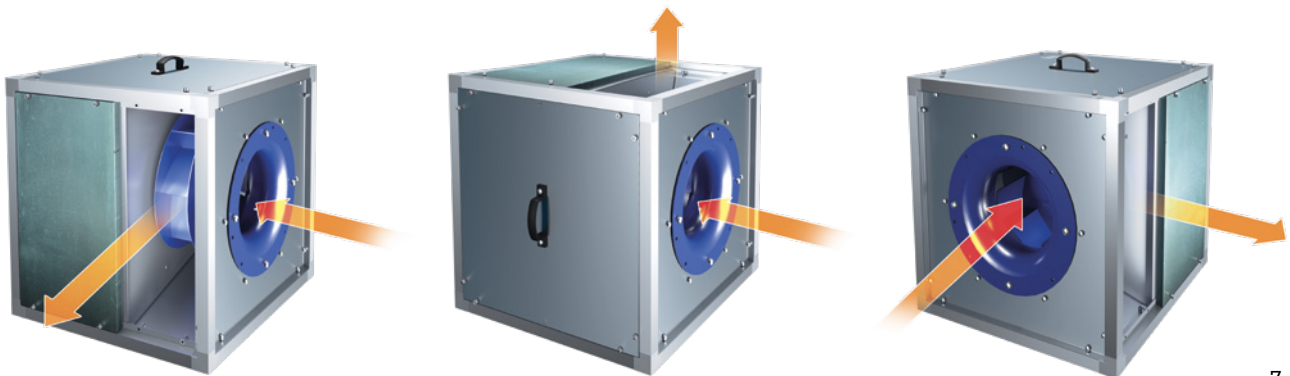
CONSTRUCTION



- Motor protection rating: IP55
- Motor insulation class: F
- Galvanized steel impeller with backward curved blades made of heat-resistant steel
- Single-phase or three-phase motors
- The motor is located outside the air flow and separated from the impeller with a metal panel

VERSATILITY OF MOUNTING

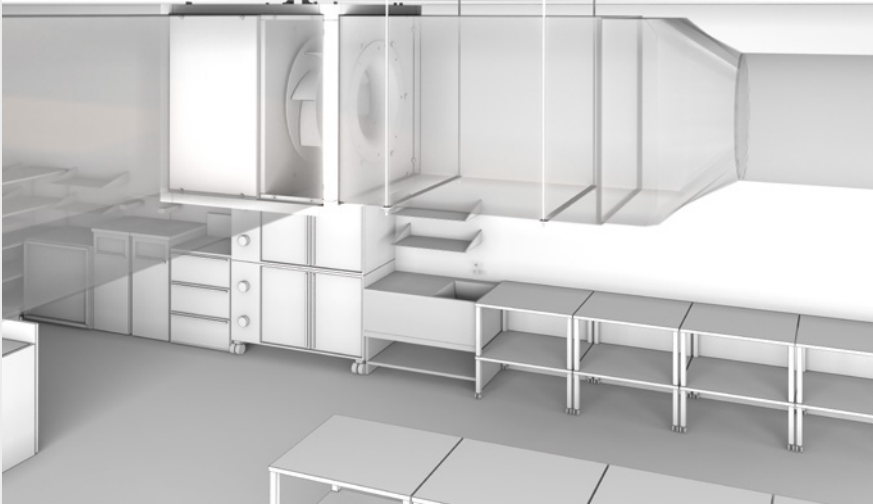
- The direction of air flow can be easily changed by rearranging the panel.



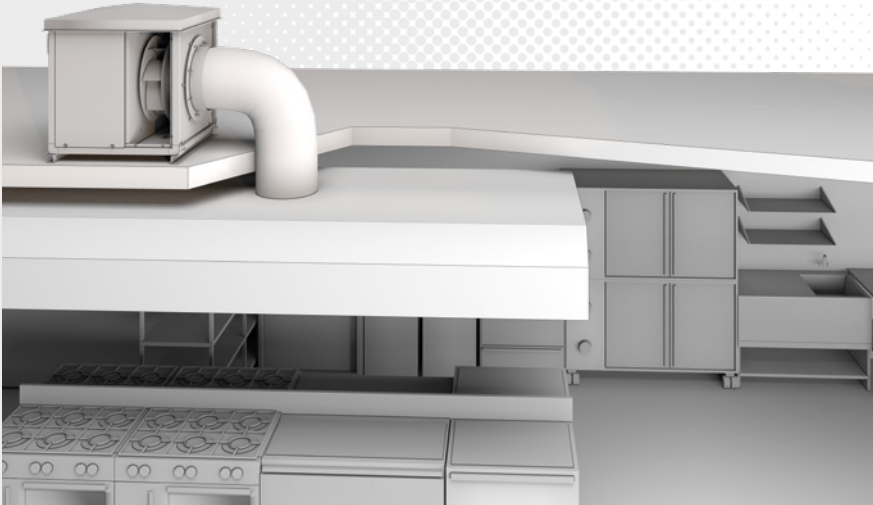
EXHAUST KITCHEN FANS: TEMPERATURE UP TO 120 °C



APPLICATION

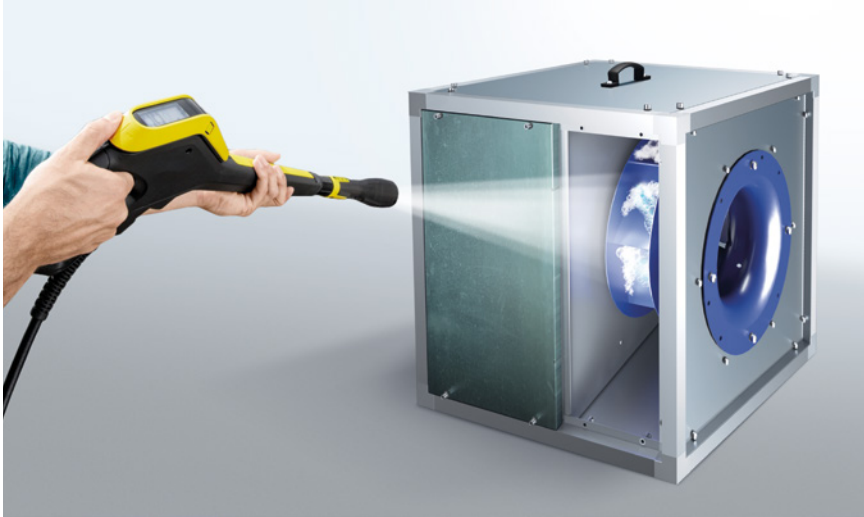


• Indoor application



• Outdoor application

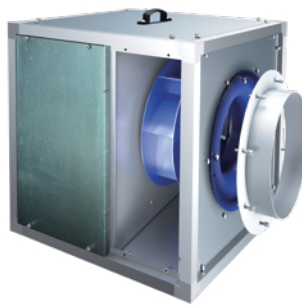
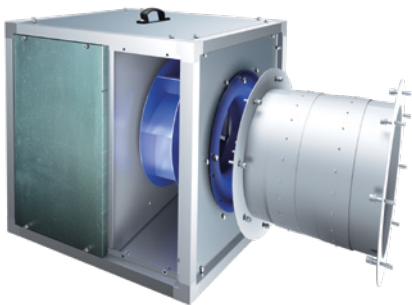
MAINTENANCE



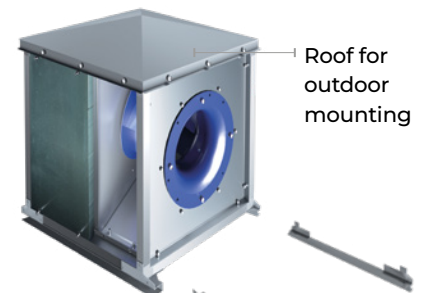
- Easy maintenance with cleaning tools
- Drainage included (washable with Kärcher cleaning tools)

ACCESSORIES

- Special flanges for round ducts



- Mounting accessories



Mounting
brackets

EXHAUST KITCHEN FANS: TEMPERATURE UP TO 120 °C



VENTS **KSK**



Air flow
up to 8 138 m³/h



Temperature
up to 120 °C
(continuous
operation)



AC motors

APPLICATION

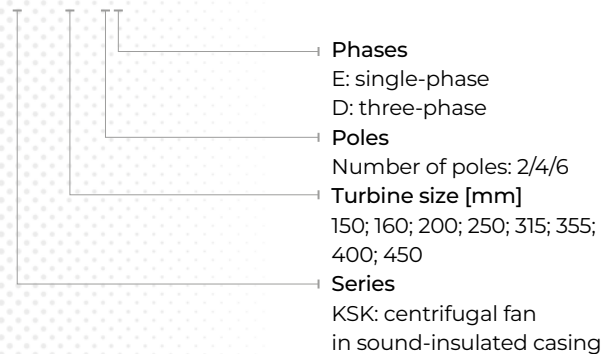
Designed to extract contaminated hot air, containing grease (when using grease filters), in conditions requiring high durability

Perfectly function in various ventilation systems for:

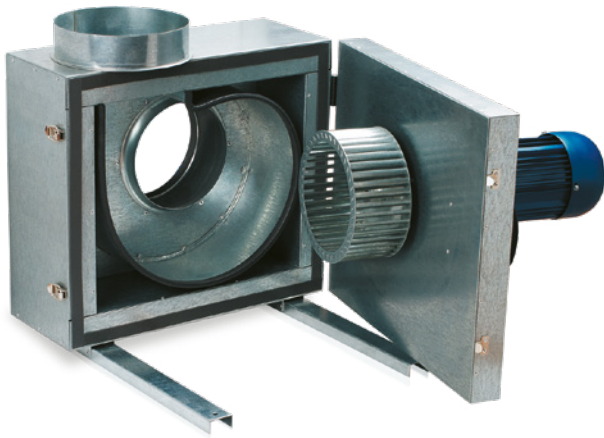
- restaurant or café kitchens
- industrial bakeries

DESIGNATION KEY

KSK 160 4E



MOTOR



- The motor is located outside the air flow and separated from the impeller with a metal panel
- Motor protection rating IP54
- Galvanized steel impeller with backward or forward curved blades
- Single-phase or three-phase motors
- Compatible with round air ducts
- The spigot diameter matches the standard air duct sizes

ACCESSORIES



Fixing bracket
KM-KSK



Sleeve
N-KSK



Flexible connector
VVH-KSK

MAINTENANCE

- Easy maintenance





02. EXHAUST SMOKE EXTRACT FANS:

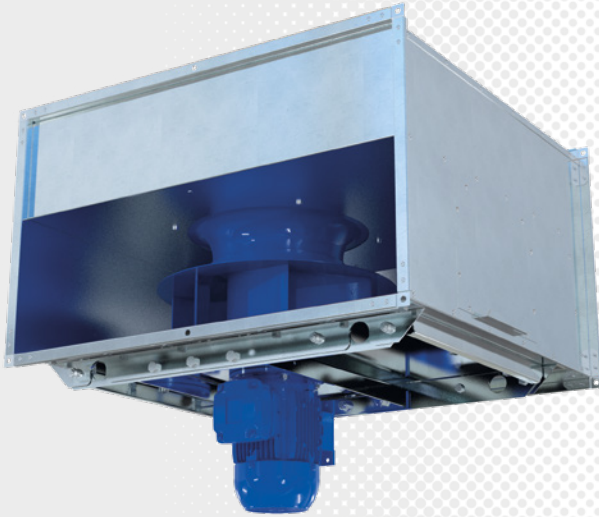
temperature
up to +400 °C for 2 hours



EXHAUST FANS: TEMPERATURE UP TO +400 °C FOR 2 HOURS



VENTS VKPD



Air flow up to 28 500 m³/h



Temperature up to 400 °C for 2 hours
(100 °C continuous operation)

APPLICATION

- The dual-purpose fan is used in emergency exhaust ventilation systems for forced removal of smoke, heated gases and combustion products, as well as for general exhaust ventilation of shopping malls, garages, warehouses, kitchens

DESIGNATION KEY

VKPD-250-2E/0,37-500x300

Spigot dimensions [mm]	500x300; 600x300; 600x350; 700x400; 700x500; 800x600; 900x700; 1000x700; 1200x900
Motor power [kW]	x: single-speed; x/x: two-speed
Phases	E: single-phase; D: three-phase
Poles	single-speed fan: 2/4/6 two-speed fan: 2/4; 4/6
Impeller standard size [mm]	250; 280; 315; 355; 400; 450; 500; 560; 630; 710
Series	VKPD: rectangular inline fan for smoke removal



MOTOR

- AC motor
- The motor is located outside to avoid obstructing the air flow and separated from the impeller with a metal panel
- Motor protection rating IP54
- Galvanized steel impeller
- Single-phase or three-phase motors
- The fans can be equipped with a single- or three-phase electric motor
- Single-speed fans are equipped with 2-, 4- or 6-pole motors. Two-speed fans are equipped with 2/4, 4/6, 4/8-pole motors

OPERATION

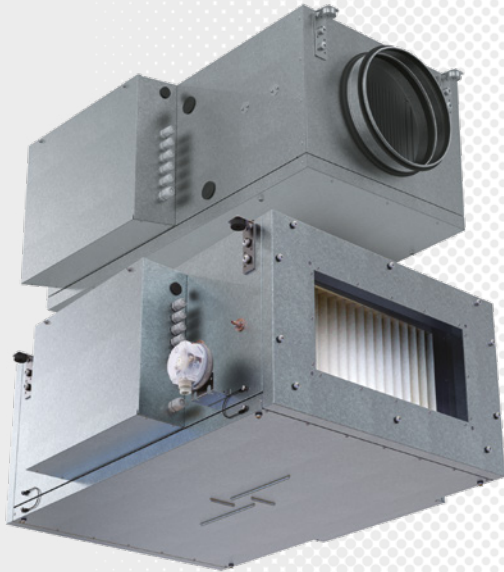
- The fan is designed to remove smoke and air mixtures up to +400 °C for 120 minutes and for continuous operation at a temperature of the transported medium up to +100 °C
- The fans can be equipped with a frequency converter for controlling the rotation frequency



03. **SUPPLY UNITS AND FANS**



VENTS MPA E/W EC



Air flow
up to 4 950 m³/h



Electric or water
heater



EC motors



BMS  Modbus

APPLICATION



- Ventilation units for efficient supply ventilation in various premises
- Controllable air supply, heating and filtration

DESIGNATION KEY

MPA 1000 E _ EC L A31

- Automatic control system
A30: kVent controller with th-Tune remote controller
A31: kVent controller without the remote controller
A32: kVent controller with pGDE remote controller
- Connection side
L: left
R: right
- Motor type
EC: electronically commutated
- Number of heat exchanger rows (for water heater only)
- Heater type: W – water heater, E – electric heater
- Maximum air flow [m³/h]: 700; 1000; 1500; 2000; 3000; 4000
- Series: MPA – single-block air supply unit

CONTROL AND AUTOMATION

Functions	A31
Wired control panel	A30 
	A32 
Unit on / off	+
Speed control	+
Filter clogging control by pressure sensor	+ (except MPA 700 W/E EC)
Filter clogging control by timer MPA 700 W/E EC	+
Weekly schedule	+
Electric heater protection	+
Supply air temperature control	+
Outer temperature sensor	+
Reheater	Water or electric
Air damper control	+
Alarm indication	+
BMS connection	ModBUS (RTU)
Humidity sensor	0-10 V or NO
CO₂ sensor	0-10 V or NO
Three-way valve control	+
Circulation pump control	+
Condensing unit control	0-10 V



SUPPLY FANS



VENTS BOOST



- **Air flow up to 5 700 m³/h**
- AC or EC motors
- Single-phase motors
- Round ducts from 150 to 400
- High-efficiency mixed-flow impeller
- The casing is made of high-quality durable plastic

VENTS BOOST-I



- **Air flow up to 5 415 m³/h**
- AC or EC motors
- Single-phase motors
- Round ducts from 200 to 400
- High-efficiency mixed-flow impeller
- The casing is made of galvanized steel with 30 mm of sound insulation

VENTS VKM



- **Air flow up to 6 280 m³/h**
- AC or EC motors
- Single-phase motors
- Round ducts from 100 to 450
- Centrifugal impeller with backward curved blades
- The casing is made of steel with a special polymer coating

VENTS VKP



- **Air flow up to 11 190 m³/h**
- AC or EC motors
- Single-phase or three-phase motors
- Centrifugal impeller with backward curved blades
- The casing is made of galvanized steel

VENTS VKPI



- **Air flow up to 11 190 m³/h**
- AC or EC motors
- Single-phase or three-phase motors
- Centrifugal impeller with backward curved blades
- The casing is made of galvanized steel with 50 mm of sound insulation

ACCESSORIES FOR ROUND DUCTS FOR INLINE FANS



Silencer
SR



Filter
FB



Filter
FBK



Heater
NK



Heater
NK



Backdraft
damper
KOM



Air damper
KR



Clamps

ACCESSORIES FOR RECTANGULAR DUCTS FOR INLINE FANS



Silencer
SR



Filter
FB



Filter
FBK



Heater
NK



Heater
NK



Air flow
regulator
RRV



Flexible
connectors
VVG

SPEED CONTROL SWITCHES



P2-1-300
P3-1-300

SPEED CONTROLLERS

For fans equipped
with EC motors



R-1/010

For fans equipped
with AC motors



RS...PS



RS-1-400



RS-...-T

Thyristor speed controllers
for smooth control



RSA5E-...-T



RSA5D-...-T



RSA5D-...-M

Transformer speed controllers
for multi-speed control







The producer reserves the exclusive right to modify the construction, design and specifications as well as alter the components of its products at any time without prior notice.

ventilation-system.com