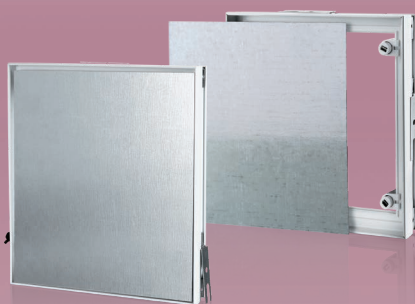
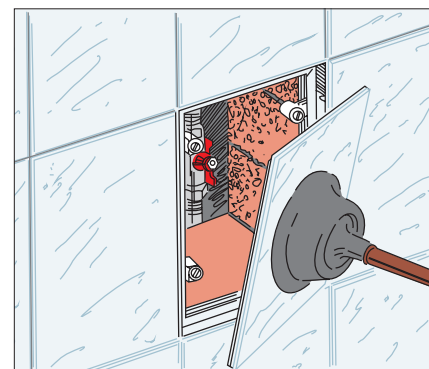
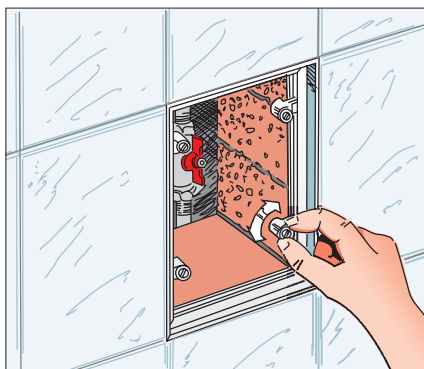
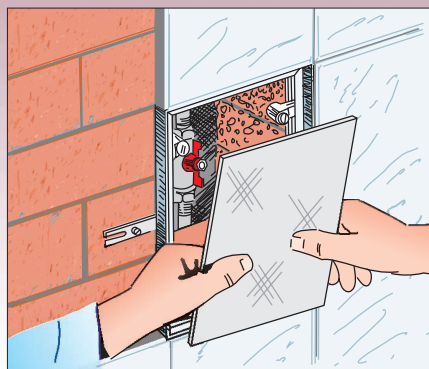


**DKP series**



Access doors on a PVC frame for attaching ceramic tiles

**Sample installations**



**Application**

- Designed for wall installation and ceramic tile attachment.
- Enable quick and convenient access to concealed equipment and utility lines.
- Concealed mounting for esthetic appearance.
- Suitable for use in humid indoor spaces.
- Protected by national patents worldwide.

**Design**

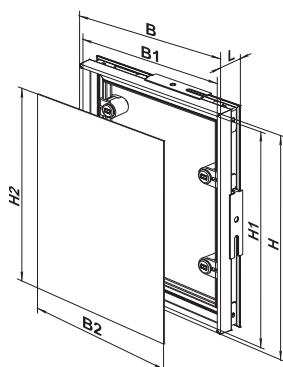
- The PVC profile frame contains magnets and hides the tile-to-tile gap.

- Metal plate for attaching ceramic tiles.
- Magnetic attachment of plate to the frame.
- Press gently to open and close or use a cup plunger.
- A wide range of sizes.

**Mounting**

- Easy installation using spacers lugs.
- Height-adjustable magnets enable perfect leveling of tiles to the wall surface.
- Ceramic tiles are easily glued to the plate.
- Easy servicing.

**Dimensions**



Model	Dimensions [mm]						
	B	H	B2	H2	B1	H1	L
DKP 150x150	156	156	145	145	153	153	30
DKP 150x200	156	206	145	195	153	203	30
DKP 150x300	156	306	145	295	153	303	30
DKP 200x200	206	206	195	195	203	203	30
DKP 200x250	206	256	195	245	203	253	30
DKP 200x300	206	306	195	295	203	303	30
DKP 200x350	206	356	195	345	203	353	30
DKP 200x400	206	406	195	395	203	403	30
DKP 200x450	206	456	195	445	203	453	30
DKP 200x500	206	506	195	495	203	503	30
DKP 250x250	256	256	245	245	253	253	30
DKP 250x300	256	306	245	295	253	303	30
DKP 250x350	256	356	245	345	253	353	30
DKP 250x400	256	406	245	395	253	403	30
DKP 300x300	306	306	295	295	303	303	30
DKP 300x350	306	356	295	345	303	353	30
DKP 300x400	306	406	295	395	303	403	30
DKP 300x450	306	456	295	445	303	453	30
DKP 300x500	306	506	295	495	303	503	30
DKP 400x400	406	406	395	395	403	403	30