

FLUSH-MOUNTED DIFFUSER

DP-RC 125



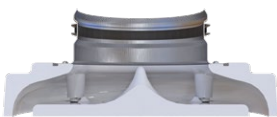
Flush-mounted diffuser DP-RC is a perfect solution for rooms of different designs and purposes as it is almost unnoticeable on the ceiling, it has stylish appearance and can be painted to match the necessary color.



The magnetic decorative panel ensures easy and fast maintenance



The diffuser is installed in suspended ceiling and easily connected to various air duct systems



Pressure loss is minimized due to the aerodynamic shape



Eight-segmented air flow regulator enables adjusting the necessary air flow (delivered separately)

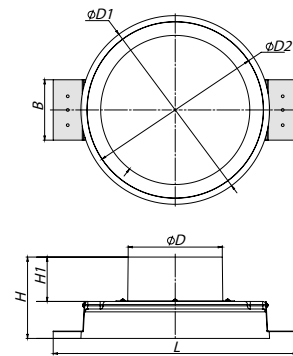


Metal flange (MP) with a rubber seal to be connected to air ducts or mounting elements

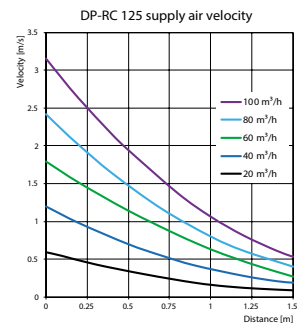
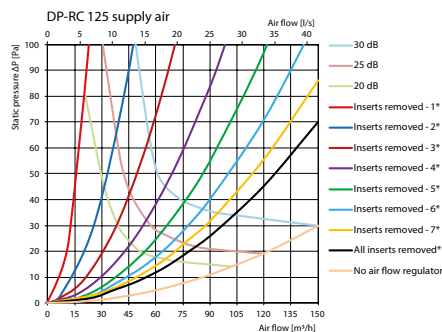
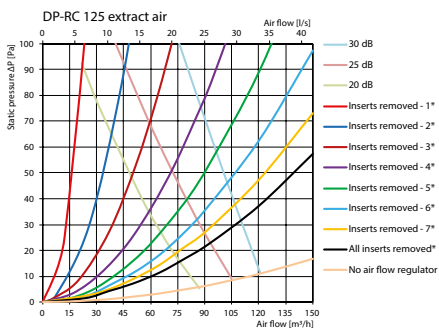


Plastic flange (by default) to be connected to rigid or flexible ducts

Model	Dimensions [mm]						
	D	D1	D2	L	H	H1	B
DP-RC 125	125	250	234	323	108	59	80
DP-RC 125 MF	124	250	234	323	99	50	80



Aerodynamic data



* The data is provided for the diffuser equipped with an R 125 F4 air flow regulator

FLUSH-MOUNTED DIFFUSER

DP-RC 125



The brochure information is for reference only.

VENTS reserves the rights to modify any of its products' features, designs, components and specifications at any time and without notice to maintain the development and quality of manufactured goods.

2024-06