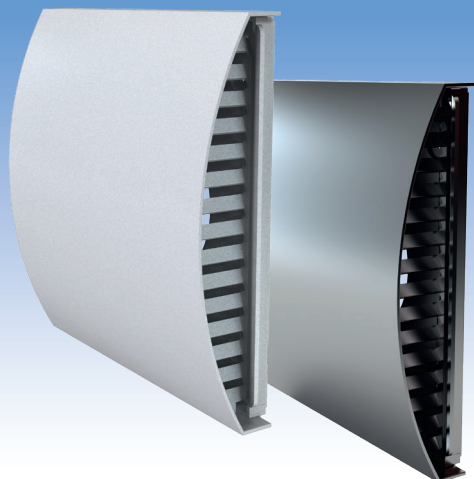


Series  
**EH-14 100**  
**EH-14 125**  
**EH-14 160**



### Application

- Decoration of supply and exhaust vents of public, residential and industrial ventilation systems.
- Outdoor wall mounting.

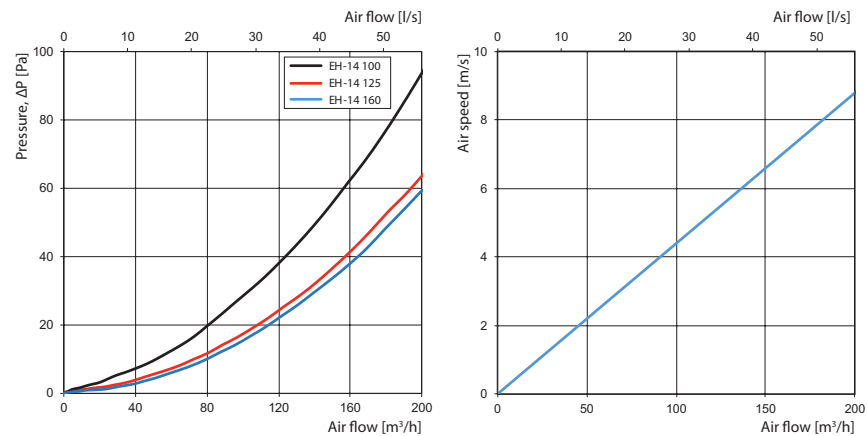
### Design

- Made of white PVC.
- High resistance to ultraviolet.
- Non-inflammable.
- Compatible with Ø 100, 125, 150 and 160 mm air ducts.
- Equipped with a canopy to remove water drops from walls.

### Modifications

- EH-14 white 100, 125 and 160: models in white colour.
- EH-14 chrome 100, 125 and 160: models with an aluminium plate with brushed stainless steel effect finish.
- EH-14 160 is connected to Ø 150 and 160 mm air ducts.

### Aerodynamic characteristics



### Overall dimensions

Model	Dimensions [mm]				Cross-sectional area [m <sup>2</sup> ]
	B	H	L	Ø D	
EH-14 100	220	230.5	54	100	0.00632
EH-14 125	220	230.5	54	125	0.00632
EH-14 160	220	230.5	54	160	0.00632

