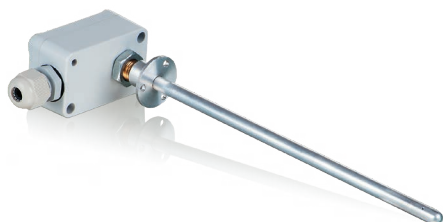


Duct temperature sensors with a terminal box
KDT-MK



■ **Application**

The duct temperature sensors are designed for installation in the air duct and temperature measurement of the air flow in the ventilation and air conditioning systems.

■ **Design**

The sensing element, NTC thermometer resistor, is enclosed in the aluminium sleeve. The thermometer resistor electric resistor depends on the temperature, the non-linear resistance. Connection of the sensor to the controller is double-wired, regardless of polarity.

The KDT-MK sensor delivery set includes a mounting flange with a fixing screw for its fixation to the air duct wall.

The sensors are supplied with a 2.5 m connecting cable. The immersion depth is adjusted for 100, 150, 200 or 400 mm.

■ **Mounting**

Fixation with screws to the air duct wall by means of the flange with the sensing element located the air stream.

Technical data

	KDT-MK
Temperature measuring range [°C]	-30...+60
Voltage [V]	≤ 5 DC *
Output	resistance
Electric connection	double-wire, cross section 2x0.25 mm ²
Relative humidity	up to 90 %, no condensation
Protection rating	IP54
Electrical appliance class	III

*Maximum current generated through the sensor by the applied voltage is 2 mA.

Overall dimensions:

Type	L [mm]
KDT-MK 100	100
KDT-MK 150	150
KDT-MK 200	200
KDT-MK 400	400

