

MV 102 MV 122 MV 152 Series



Application

- Decoration of supply and exhaust vents of public, residential and industrial ventilation systems.
- External wall mounting.

Design

- Made of quality and durable plastic.
- Two-element structure for easy maintenance.
- Screw fixing.
- Equipped with a protecting grille against birds and rodents.

Colour modifications



Modifications

MV 102, MV 122 – basic modifications



- Supply and exhaust hoods for wall mounting.
- Screw fixing.



MV 102 V, MV 122 V, MV 152 V – models with a round flange



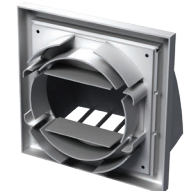
- Supply and exhaust hoods for wall mounting.
- Equipped with a round connecting flange for mounting to Ø 100 mm (MV 102 V), Ø 125 mm (MV 122 V), Ø 150 mm (MV 125 V) air ducts.



MV 102 VU – model with a multi-section flange (VU)



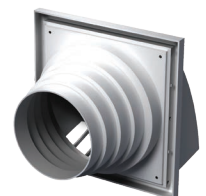
- Supply and exhaust hood for wall mounting.
- Equipped with a connecting flange for mounting to Ø 100, 125 or 55x110 mm air ducts.



MV 122 VN – model with a flange with various diameters



- Supply and exhaust hood for wall mounting.
- Equipped with a round connecting flange with various diameters for mounting to Ø 100/110/120/130/150 mm air ducts.

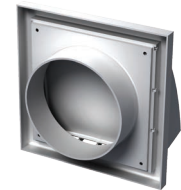


MV 102 K and MV 122 K – models with a backdraft damper

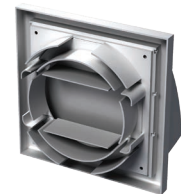

- Exhaust hoods for wall mounting.
- Fitted with a gravity backdraft damper for back flow prevention.


MV 102 VK, MV 122 VK, MV 152 VK – models with a round flange and a backdraft damper

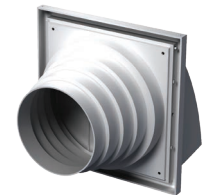

- Exhaust hoods for wall mounting.
- Fitted with a gravity backdraft damper for back flow prevention.
- Equipped with a round connecting flange for mounting with \varnothing 100 mm (MV 102 VK), \varnothing 125 mm (MV 122 VK), \varnothing 150 mm (MV 152 VK) air ducts.


MV 102 VUK – model with a multi-section flange (VU)


- Exhaust hood for wall mounting.
- Fitted with a gravity backdraft damper for back flow prevention.
- Equipped with a multi-section flange for mounting with \varnothing 100, 125 mm or 55x110 mm air duct.


MV 122 VNK – model with a flange with various diameters (VN)


- Exhaust hood for wall mounting.
- Equipped with a round connecting flange with various diameters for mounting with \varnothing 100/110/120/130/150 mm air ducts.
- Fitted with a gravity backdraft damper for back flow prevention.


Overall dimensions

| Model | Dimensions [mm] | | | | | | Air pass, [m ²] | Fig. no. |
|------------------------|-----------------|-----|----|-----|-----|-------------------------|-----------------------------|----------|
| | □B | □H | L | L1 | L2 | Flange (D) | | |
| MV 102 / MV 102 K | 154 | 110 | 15 | – | 87 | – | 0.008 | 1 |
| MV 102 V / MV 102 VK | 154 | 110 | 15 | 45 | 87 | 100 | 0.008 | 1, 2 |
| MV 102 VU / MV 102 VUK | 154 | 110 | 15 | 39 | 87 | 100, 125, 55*110 | 0.008 | 1, 3 |
| MV 122 / MV 122 K | 186 | 142 | 15 | – | 101 | – | 0.012 | 1 |
| MV 122 V / MV 122 VK | 186 | 142 | 15 | 45 | 101 | 125 | 0.012 | 1, 2 |
| MV 122 VN / MV 122 VNK | 186 | 142 | 15 | 115 | 101 | 100, 110, 120, 130, 150 | 0.012 | 1.4 |
| MV 152 V / MV 152 VK | 186 | 142 | 15 | 50 | 101 | 150 | 0.012 | 1.2 |

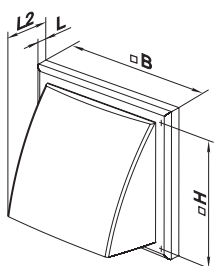


Fig. 1

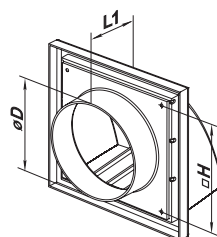


Fig. 2

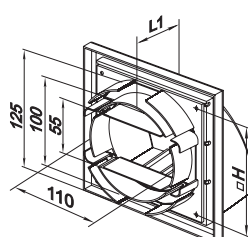


Fig. 3

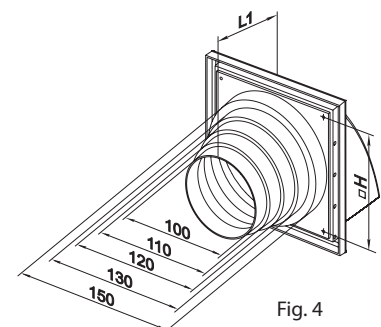


Fig. 4