

# SUPPLY AND EXHAUST PLASTIC GRILLES

## MV 123 Series



### ■ Modifications

#### ■ Application

- Decoration of supply and exhaust vents of public, residential and industrial ventilation systems.
- Used for correct air flow distribution in premises.
- Wall or ceiling mounting.

#### ■ Design

- Made of quality and durable plastic.
- Multi-element structure. The internal part is fixed to the base with latches for easy cleaning without dismantling.
- Fixing with screws.

#### ■ Colour modifications



### Basic model: **MV 123**



- Wall or ceiling mounting grille.
- **MV 123 s**: model with a protecting insect screen.



### Model with an air flow regulator (R): **MV 123 R**



- Equipped with a movable flap for air flow regulation.
- Cross-sectional regulation with a tilt wand or pull cords.
- **MV 123 Rs**: model with an air flow regulator and a protecting insect screen.



### Model with gravity louvre shutters (J): **MV 123 J**

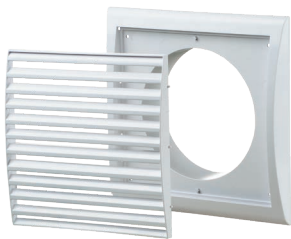


- Exhaust grille for wall mounting.
- Equipped with gravity louvre shutters for back flow preventing.



**Model with a round flange and gravity louvre shutters (VJ): MV 123/125 VJ, MV 123/150 VJ**


- Exhaust grille for wall mounting.
- Equipped with gravity louvre shutters.
- Fitted with a round connecting flange for mounting with  $\varnothing$  125 mm or  $\varnothing$  150 mm air duct.


**Model with a round flange (V): MV 123/125 V, MV 123/150 V**


- Fitted with a round connecting flange for mounting with  $\varnothing$  125 mm air duct (**MV 123/125 V**) or  $\varnothing$  150 mm air duct (**MV 123/150 V**).
- Suitable for direct mounting with VENTS VKO 125 fan (**MV 123/125 V**) or with VENTS VKO 150 (**MV 123/150 V**).
- **MV 123/125 Vs, MV 123/150 Vs**: models with a round flange and a protecting insect screen.


**Model with an air flow regulator (R): MV 123/150 VR**


- Fitted with a round connecting flange for mounting with  $\varnothing$  125 mm air duct (**MV 123/125 VR**) or  $\varnothing$  150 mm air duct (**MV 123/150 VR**).
- Equipped with a movable flap for air flow regulation.
- Cross-sectional regulation with a tilt wand or pull cords.
- Suitable for direct mounting with VENTS VKO 125 fan (**MV 123/125 VR**) or with VENTS VKO 150 (**MV 123/150 VR**).
- **MV 123/125 VRs, MV 123/150 VRs**: grilles with a round flange, an air flow regulator and a protecting insect screen.


**Overall dimensions**

Model	Dimensions, [mm]							Cross-sectional area, [m <sup>2</sup> ]	Fig. no.
	B	H	B1	H1	L	L1	D		
MV 123	193	188	151	135	18	-	-	0.0097	1, 2
MV 123 R	193	188	151	135	18	35	125	0.0095	1, 3
MV 123/125 V	193	188	151	135	18	35	125	0.0097	1, 3
MV 123/150 V	193	188	151	135	18	35	150	0.0097	1, 3
MV 123/125 VR	193	188	151	135	18	35	125	0.0056	1, 3
MV 123/150 VR	193	188	151	135	18	35	150	0.0084	1, 3
MV 123 J	193	188	151	135	18	-	-	0.016	1, 2
MV 123/125 VJ	193	188	151	135	18	53	125	0.01	1, 3
MV 123/150 VJ	193	188	151	135	18	53	150	0.014	1, 3

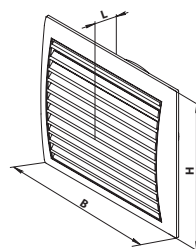


Fig. 1

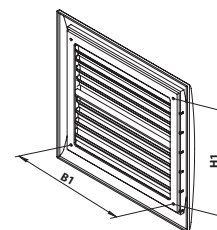


Fig. 2

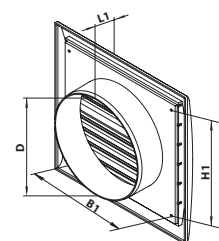


Fig. 3

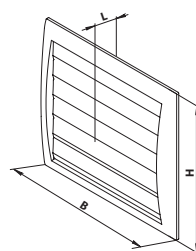


Fig. 1

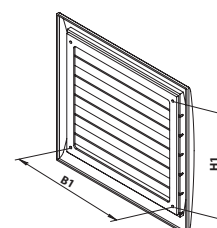


Fig. 2

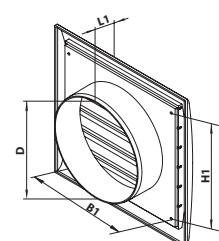


Fig. 3