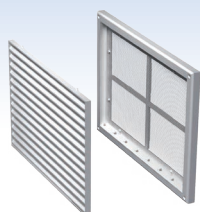


**MV 170
Series**



Modifications

MV 170 – basic modification



- Wall or ceiling mounting.
- **MV 170 s** – model with a protecting insect screen.



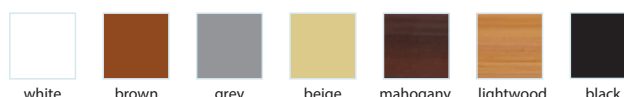
Application

- Decoration of supply and exhaust vents of public, residential and industrial ventilation systems.
- Used for correct air flow distribution in premises.
- Wall or ceiling mounting.

Design

- Made of quality and durable plastic.
- Multi-element structure. The internal part is fixed to the base with latches for easy cleaning without dismantling.
- Screw fixing.

Colour modifications



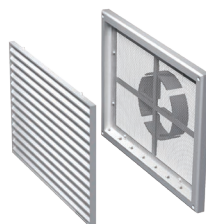
MV 170 R – model with an air flow regulator (R)



- Equipped with a movable flap for air flow regulation.
- Air pass is regulated with a tilt wand or pull cords.
- **MV 170 Rs** – model with air flow regulator and a protecting insect screen.



MV 170 VD – model with four-element connecting flange (VD)



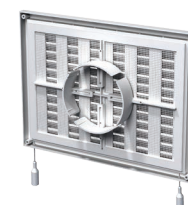
- Equipped with four-element connecting flange with adjustable diameter for connection to Ø 100-150 mm round air duct.
- **MV 170 VDs** – model with four-element connecting flange and a protecting insect screen.



MV 170 VDR – model with four-element connecting flange and air flow regulator



- Equipped with four-element connecting flange with adjustable diameter for connection to Ø 100-150 mm round air duct.
- Equipped with a movable flap for air flow regulation.
- Air pass is regulated with a tilt wand or pull cords.
- **MV 170 VDRs** – model with four-element connecting flange, air flow regulator and a protecting insect screen.



Overall dimensions

Model	Dimensions [mm]							Air pass, [m ²]	Fig. no.
	H	B	L	L1	H1	B1	D		
MV 170	221	299	15	-	205	283	-	0.0237	1
MV 170VD	221	299	15	42	205	283	100-150	0.018	1, 2
MV 170 R	221	299	15	-	205	283	-	0.012	1
MV 170VDR	221	299	15	42	205	283	100-150	0.088	1, 2

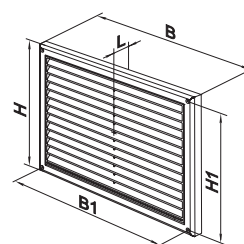


Fig. 1

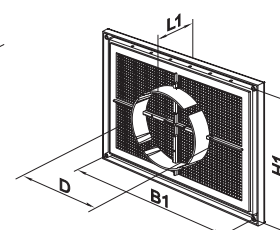


Fig. 2