

MV 250 ASA Series



Application

- Decoration of supply and exhaust vents of public, residential and industrial ventilation systems.
- Used for correct air flow distribution in premises.
- Wall or ceiling mounting.

Design

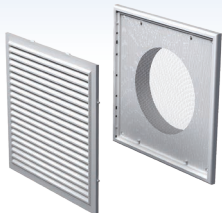
- Made of quality and durable plastic.
- Multi-element structure. The internal part is fixed to the base with latches for easy cleaning without dismantling.
- Fixing with screws or lugs depending on grille modification.

Colour modifications



Modifications

MV 250/150 V ASA – model with a round Ø 150 mm flange



- Wall or ceiling mounting.
- Fitted with a round connecting flange for mounting with Ø 150 mm air duct.
- Suitable for direct mounting with VENTS VKO 150 fan.
- Screw fixing.
- **MV 250/150 Vs ASA** – model with a round flange and a protecting insect screen.



MV 250/200 V ASA – model with a round Ø 200 mm flange



- Fitted with a round connecting flange for mounting with Ø 200 mm air duct.
- Screw fixing.
- **MV 250/200 Vs ASA** – model with a round flange and a protecting insect screen.



MV 250 VD ASA – model with four-element connecting flange



- Equipped with four-element connecting flange with adjustable diameter for connection to Ø 100-150 mm round air duct.
- Screw fixing.
- **MV 250 VDs ASA** – model with four-element flange and a protecting insect screen.



Overall dimensions

Model	Dimensions [mm]					Air pass, [m ²]	Fig. no.
	□B	□H	L	L1	Flange (D)		
MV 250/150 V ASA	250	214	14	44	150	0.02	1, 2
MV 250/200 V ASA	250	214	14	44	200	0.02	1, 2
MV 250 VD ASA	250	214	14	42	100-150	0.02	1, 3

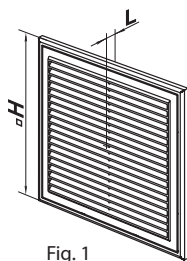


Fig. 1

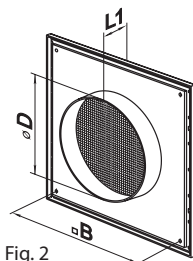


Fig. 2

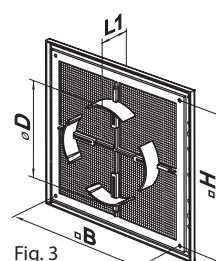


Fig. 3