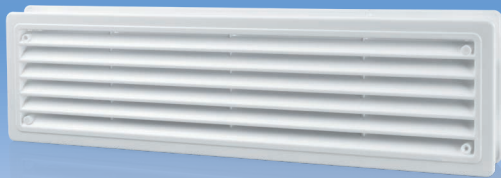


**MV 440/2  
Series**



**Application**

- Mounting in door leaves of bathrooms, kitchens, etc.
- Used to arrange correct air circulation in premises.

**Design**

- The grille consists of two parts.
- Made of high quality white plastic.
- Available in various colour modifications.
- The mating grille parts are connected by slots and fixed with screws.
- Minimum door leaf thickness is 32 mm.
- Required cutout area in door leaf is 99x435 mm.
- Modifications with a protecting insect screen are available.

**Colour modifications**



**Modifications**

- **MV 440/2 s** – model with a protecting insect screen.

**Overall dimensions**

Model	Dimensions [mm]		Air pass, [m <sup>2</sup> ]
	H	L	
MV 440/2	120	460	0.0152

