

MV 102 V ASA
MV 122 V ASA
MV 152 V ASA
Series



■ **Application**

- Decoration of supply and exhaust vents of public, residential and industrial ventilation systems.
- External wall mounting.

■ **Design**

- Made of quality and durable plastic.
- Two-element structure for easy maintenance.
- Screw fixing.
- Equipped with a protecting grille against birds and rodents.

■ **Colour modifications**

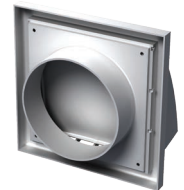


■ **Modifications**

MV 102 VK ASA, MV 122 VK ASA, MV 152 VK ASA – models with a round flange and a backdraft damper



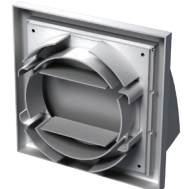
- Exhaust hoods for wall mounting.
- Fitted with a gravity backdraft damper for back flow prevention.
- Equipped with a round connecting flange for mounting with \varnothing 100 mm (**MV 102 VK ASA**), \varnothing 125 mm (**MV 122 VK ASA**), \varnothing 150 mm (**MV 152 VK ASA**) air ducts.



MV 102 VUK ASA – model with a multi-section flange (VU)



- Exhaust hood for wall mounting.
- Fitted with a gravity backdraft damper for back flow prevention.
- Equipped with a multi-section flange for mounting with \varnothing 100, 125 mm or 55x110 mm air duct.



■ **Overall dimensions**

Model	Dimensions [mm]						Air pass, [m ²]	Fig. no.
	□B	□H	L	L1	L2	Flange (D)		
MV 102 VK ASA	154	110	15	45	87	100	0.008	1, 2
MV 102 VUK ASA	154	110	15	39	87	100, 125, 55*110	0.008	1, 3
MV 122 VK ASA	186	142	15	45	101	125	0.012	1, 2
MV 152 VK ASA	186	142	15	50	101	150	0.012	1.2

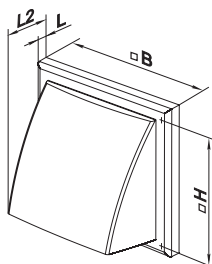


Fig. 1

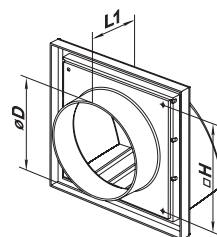


Fig. 2

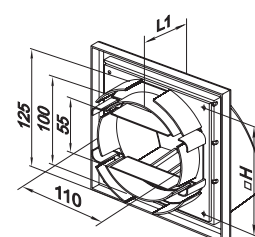


Fig. 3