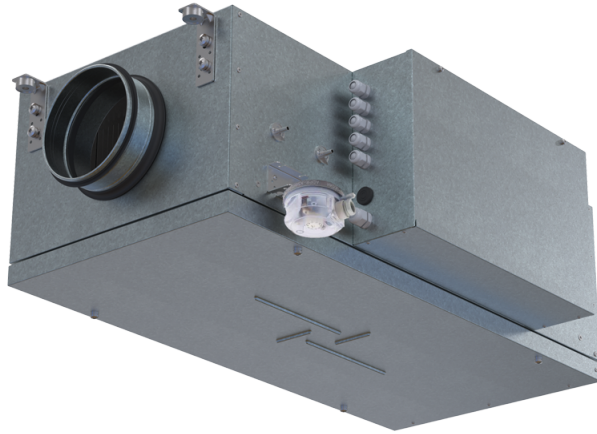


MPA 300 E-5.1 EC A31



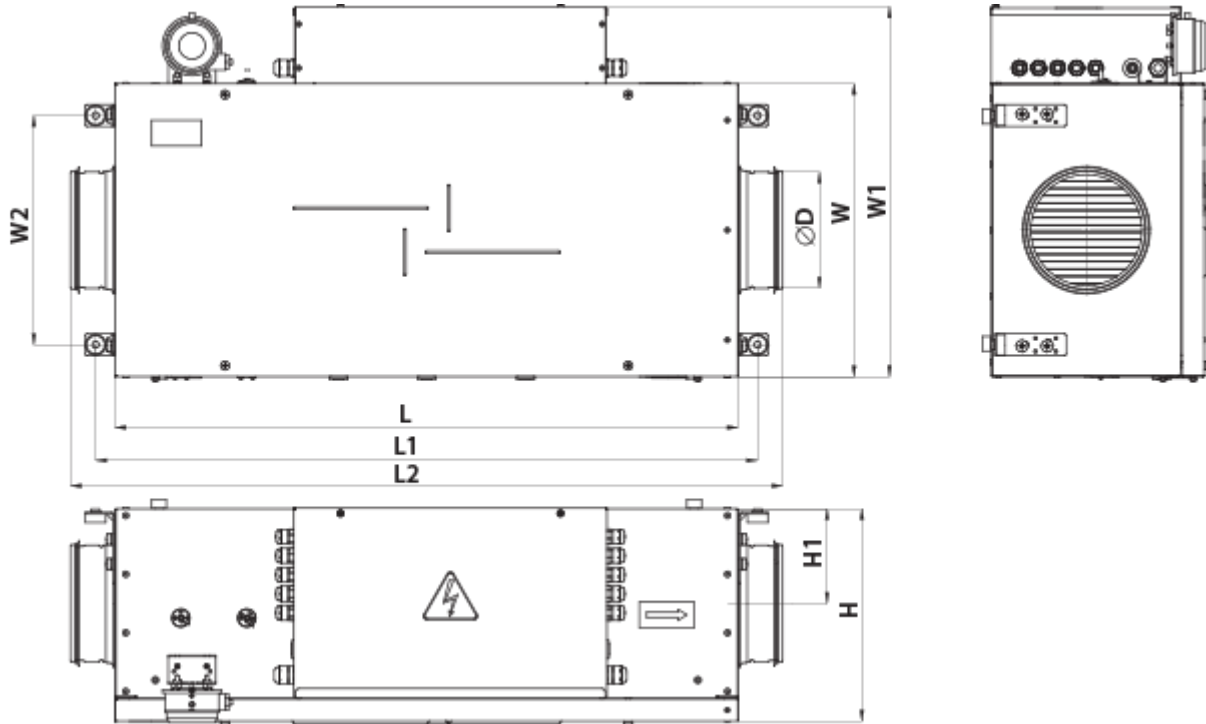
Air supply units in the sound- and heat-insulated casing

- Power of electrical reheater: 5100
- Maximum airflow: 354
- Sound pressure level LpA at 3 m: 35
- Filter: Coarse 90%/G4 (опция ePM1 70%/F7), Coarse 90% / G4 (option ePM1 70% / F7)
- Sound insulation
- Motor type: EC
- Reheater: Electric
- BMS protocol: ModBus
- Control: Wired control panel
- Casing material: Aluzinc steel

	Unit of measurement	MPA 300 E-5.1 EC A31
Connected air duct size	mm	160
Minimum supply voltage	V	230
Maximum supply voltage	V	230
Power supply frequency	Hz	50
Rated power	W	64
Power of electrical reheater	W	5100
Unit current	A	7.4
Maximum airflow	m ³ /h	354
Sound pressure level LpA at 3 m	dB(A)	35
Weight	kg	24
Filter	-	Coarse 90%/G4 (опция ePM1 70%/F7), Coarse 90% / G4 (option ePM1 70% / F7)
Transported air temperature (max)	°C	40
Transported air temperature (min)	°C	-30
Ingress protection rating	-	IP22
Ingress protection rating of the drive	-	IP44



Dimensions

D	H	L	L1	L2	W	W1	W2
160	290	850	903	950	400	514	313



Accessories

Other accessories




Name	Photo	Description
SF 334x226x48 G4		Panel filter G4
SF 334x226x48 F7		F7 panel filter

Other accessories


Name	Photo	Description
VVG 125		Flexible anti-vibration connector

For round ducts



Name	Photo	Description
------	-------	-------------

SR 125/600		Silencer is applied for noise absorption produced during the ventilating equipment operation and spread along the ducting systems
SR 125/900		Silencer is applied for noise absorption produced during the ventilating equipment operation and spread along the ducting systems
SR 125/1200		Silencer is applied for noise absorption produced during the ventilating equipment operation and spread along the ducting systems

For round ducts

Name	Photo	Description
KRV 125		Air damper for air flow cut-off in round air ducts

Electric actuators

Name	Photo	Description
Belimo TF230		The actuators are designed for controlling air dampers with cross section up to 0.4 m ² performing protection functions
Belimo TF24		The actuators are designed for controlling air dampers with cross section up to 0.4 m ² performing protection functions