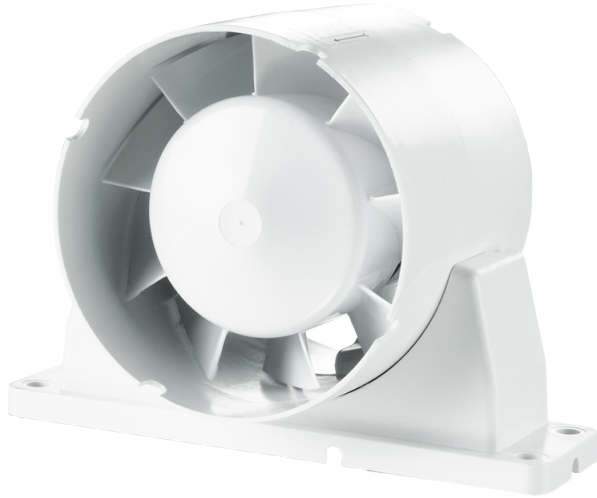


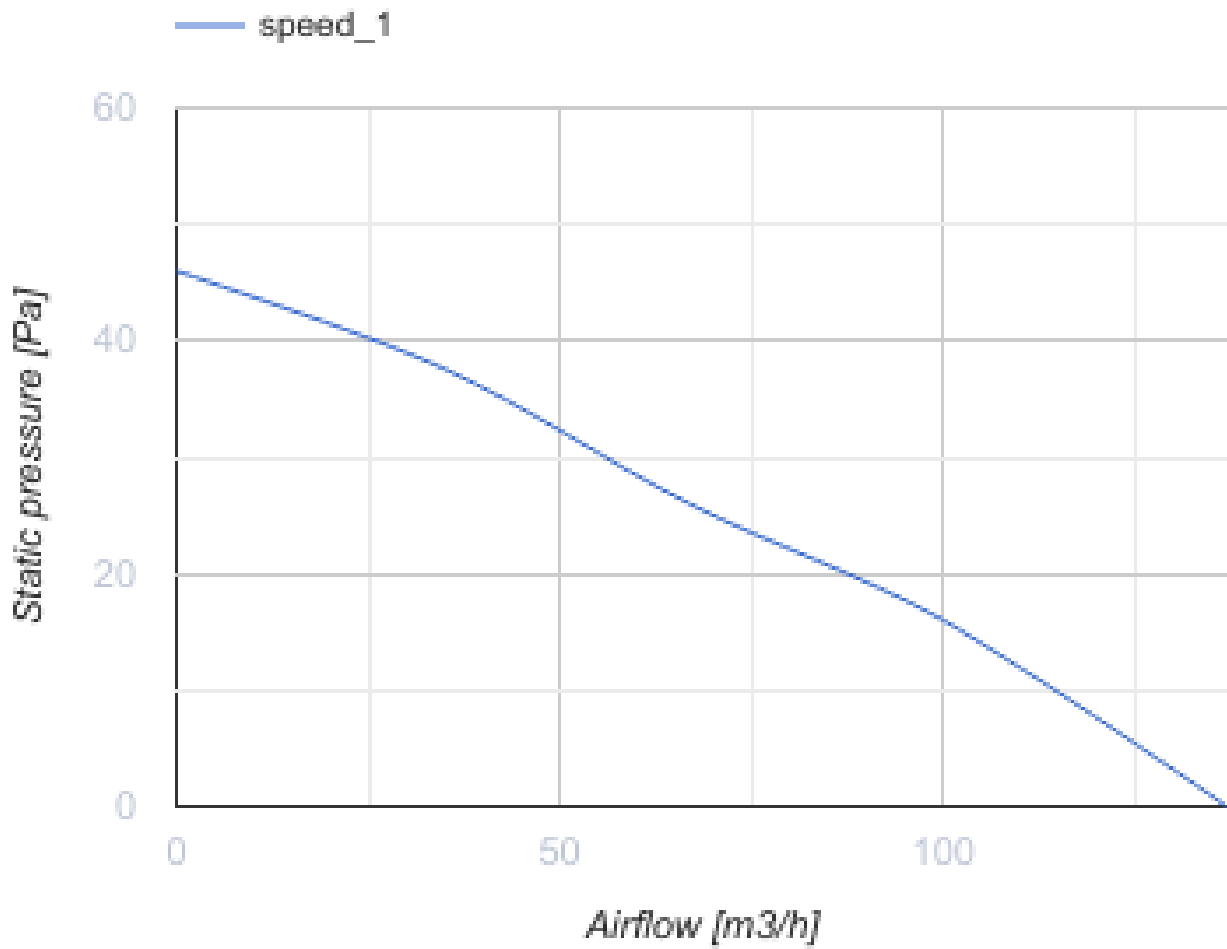
# 100 VKO1k L turbo

Axial inline fans, for exhaust or supply ventilation

- Maximum airflow: 137
- Sound pressure level LpA at 3 m: 37
- Motor type: AC
- Casing material: Plastic



	Unit of measurement	100 VKO1k L turbo
Connected air duct size	mm	100
Speed	-	1
Minimum supply voltage	V	220
Maximum supply voltage	V	240
Power supply frequency	Hz	50/60
Rated power	W	16
Unit current	A	0.1
Maximum airflow	m <sup>3</sup> /h	137
Sound pressure level LpA at 3 m	dB(A)	37
Weight	kg	0.49
Ambient air temperature min	°C	1
Ambient air temperature max	°C	40
Ingress protection rating	-	IPX4



### Dimensions

ØD	Ød	B	B1	H	L	L1	L2	L3
100	59	160	144	110	100	10	45	29

