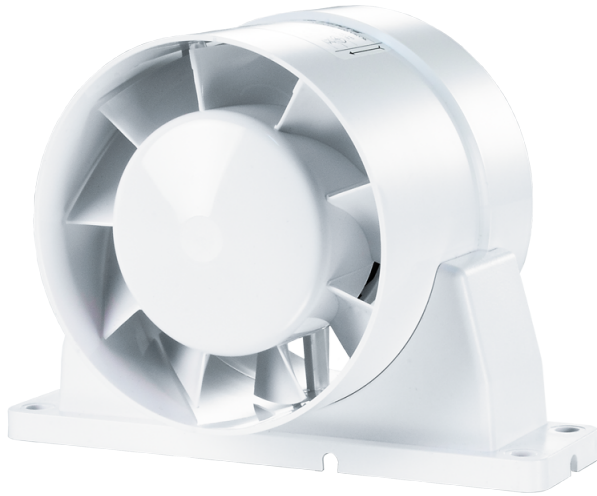


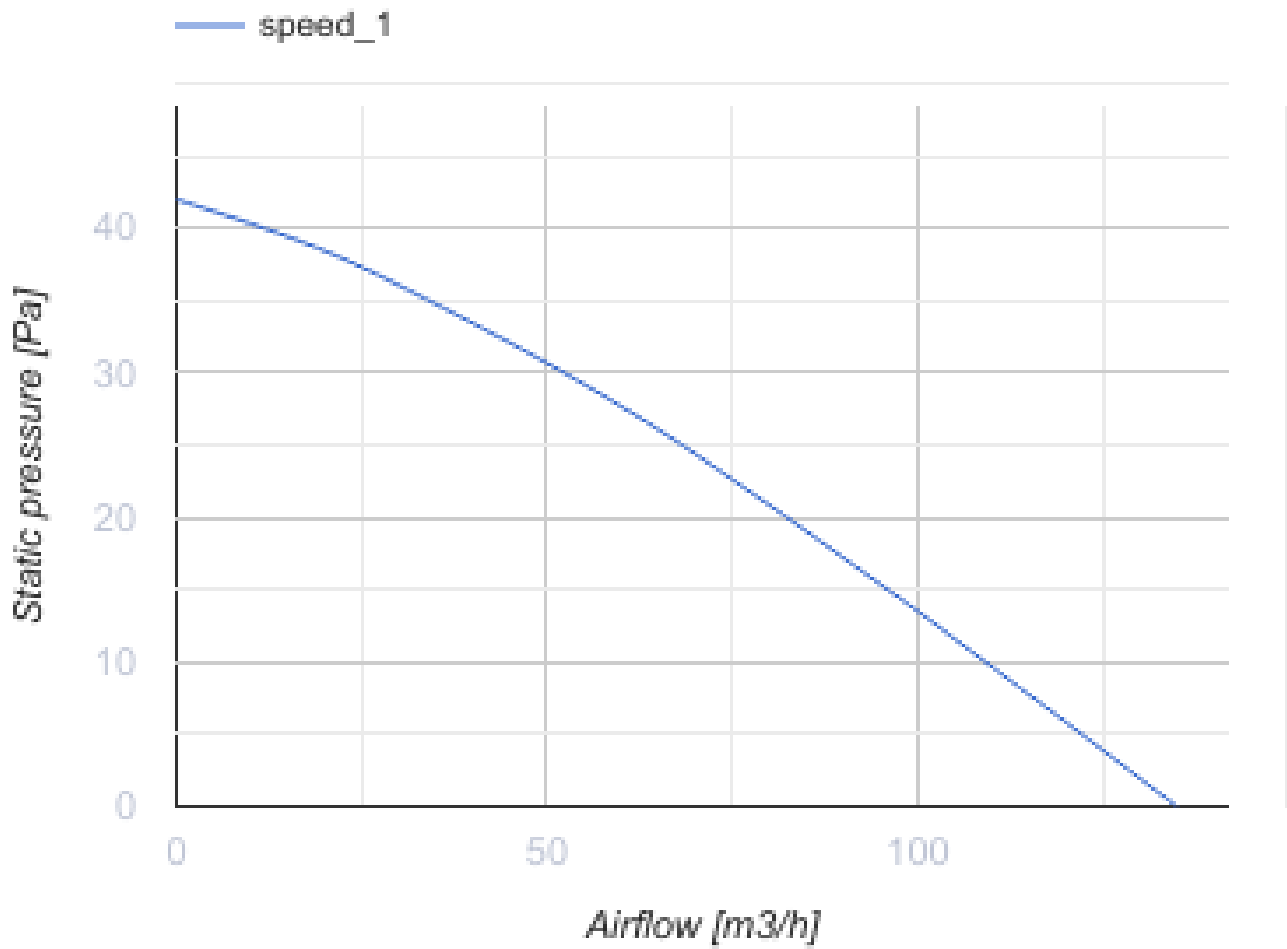
# 100 VKOk L turbo



Axial high-performance inline fans for extract or supply ventilation

- Maximum airflow: 135
- Sound pressure level LpA at 3 m: 38
- Motor type: AC
- Casing material: Polypropylene/Thermoplastic elastomer

	Unit of measurement	100 VKOk L turbo
Connected air duct size	mm	100
Speed	-	1
Minimum supply voltage	V	220
Maximum supply voltage	V	240
Power supply frequency	Hz	50/60
Rated power	W	16
Unit current	A	0.1
Maximum airflow	m <sup>3</sup> /h	135
Sound pressure level LpA at 3 m	dB(A)	38
Weight	kg	0.41
Ambient air temperature min	°C	1
Ambient air temperature max	°C	40
Ingress protection rating	-	IPX4



### Dimensions

ØD	ØD1	B	B1	H	L	L1	L2	L3
100	104	160	144	114	91	31	45	29

