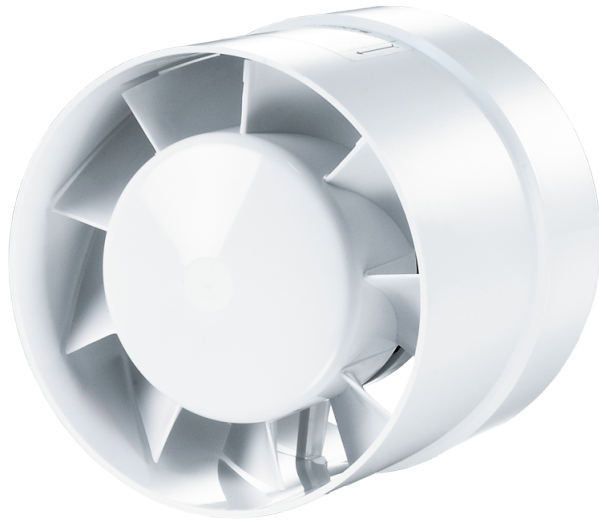


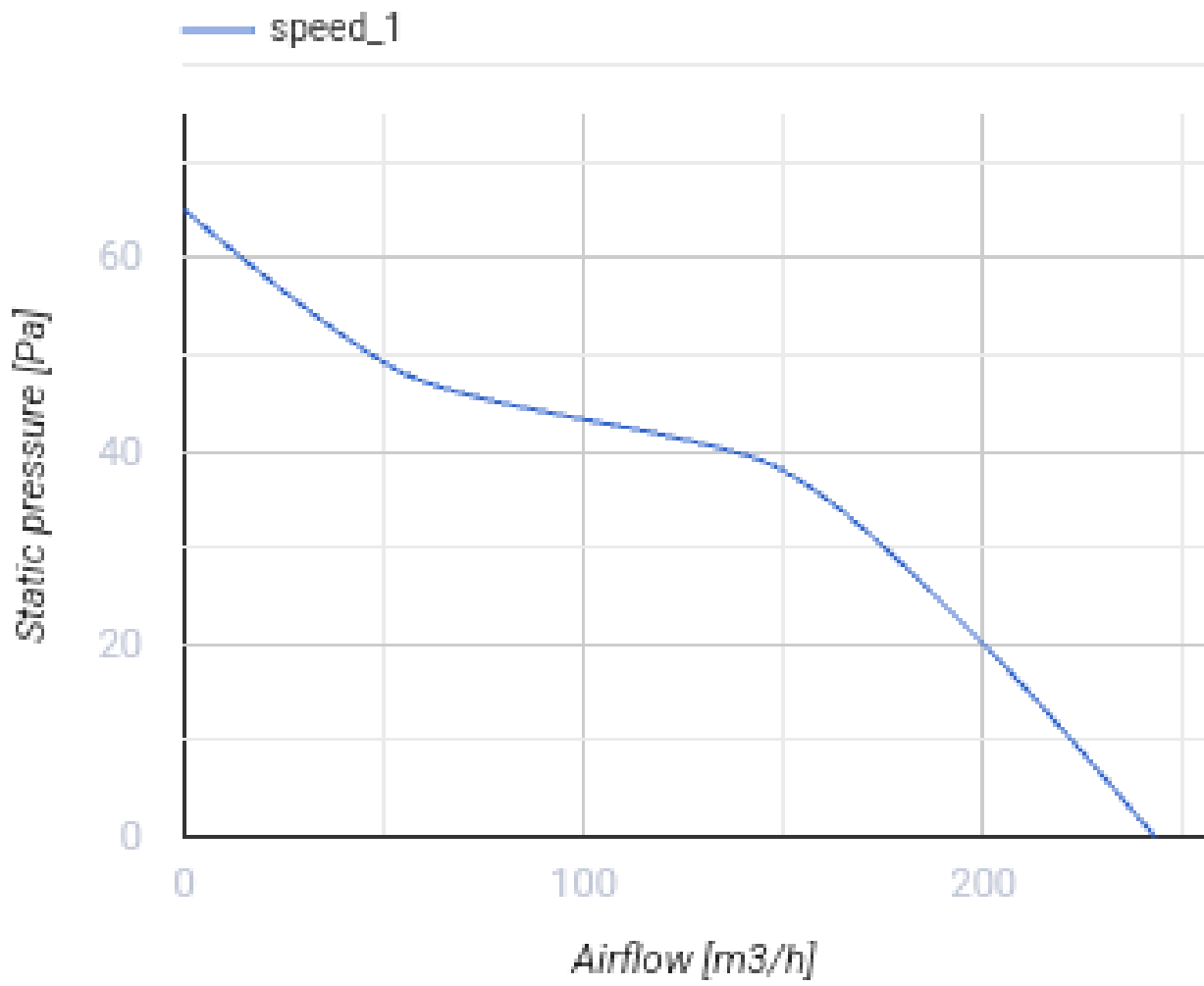
# 125 VKO L turbo



Axial high-performance inline fans for extract or supply ventilation

- Maximum airflow: 243
- Sound pressure level LpA at 3 m: 39
- Motor type: AC
- Casing material: Polypropylene/Thermoplastic elastomer

	Unit of measurement	125 VKO L turbo
Connected air duct size	mm	125
Speed	-	1
Minimum supply voltage	V	220
Maximum supply voltage	V	240
Power supply frequency	Hz	50/60
Rated power	W	24
Unit current	A	0.105
Maximum airflow	m <sup>3</sup> /h	243
Sound pressure level LpA at 3 m	dB(A)	39
Weight	kg	0.48
Ambient air temperature min	°C	1
Ambient air temperature max	°C	40
Ingress protection rating	-	IPX4



### Dimensions

<b>ØD</b>	<b>ØD1</b>	<b>L</b>	<b>L1</b>
125	129	93	31

