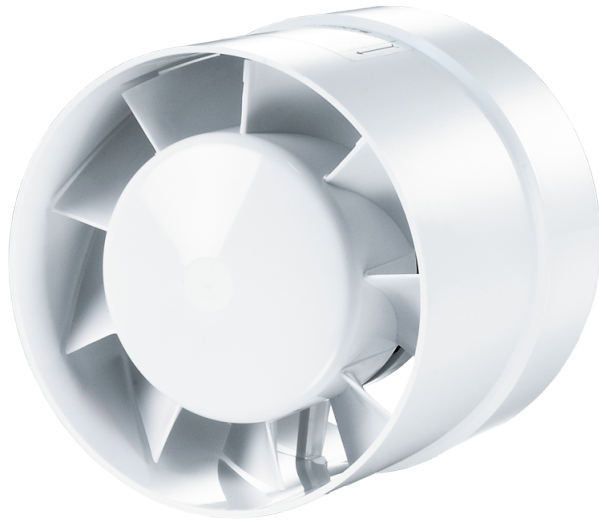


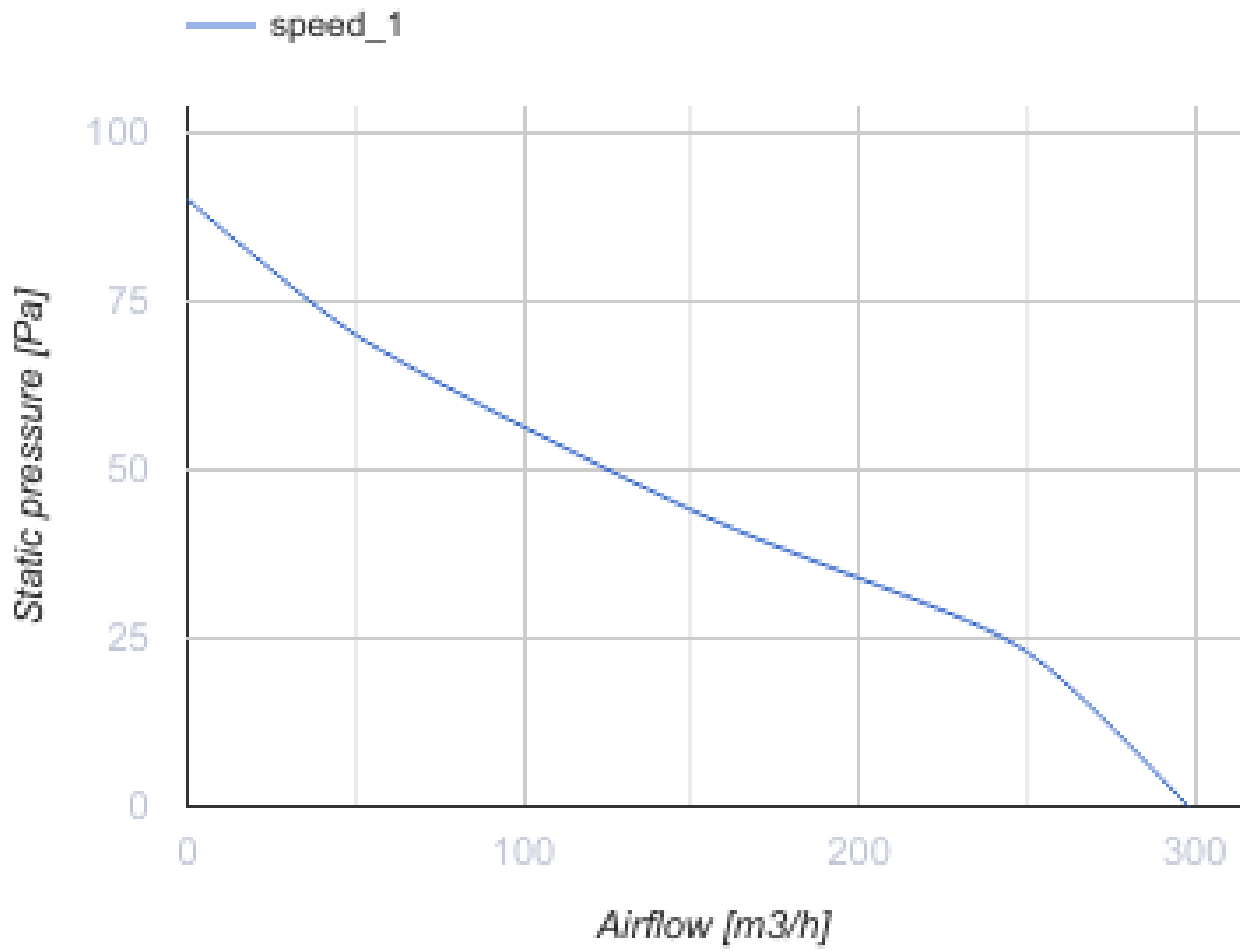
# 150 VKO L



Axial inline fans, for exhaust or supply ventilation

- Maximum airflow: 298
- Sound pressure level LpA at 3 m: 40
- Motor type: AC
- Casing material: Polypropylene/Thermoplastic elastomer

|                                 | Unit of measurement | 150 VKO L |
|---------------------------------|---------------------|-----------|
| Connected air duct size         | mm                  | 150       |
| Speed                           | -                   | 1         |
| Minimum supply voltage          | V                   | 220       |
| Maximum supply voltage          | V                   | 240       |
| Power supply frequency          | Hz                  | 50        |
| Rated power                     | W                   | 24        |
| Unit current                    | A                   | 0.13      |
| Maximum airflow                 | m <sup>3</sup> /h   | 298       |
| Sound pressure level LpA at 3 m | dB(A)               | 40        |
| Weight                          | kg                  | 0.8       |
| Ambient air temperature min     | °C                  | 1         |
| Ambient air temperature max     | °C                  | 40        |
| Ingress protection rating       | -                   | IPX4      |



### Dimensions

| ØD  | ØD1 | L   | L1 |
|-----|-----|-----|----|
| 150 | 154 | 108 | 46 |

