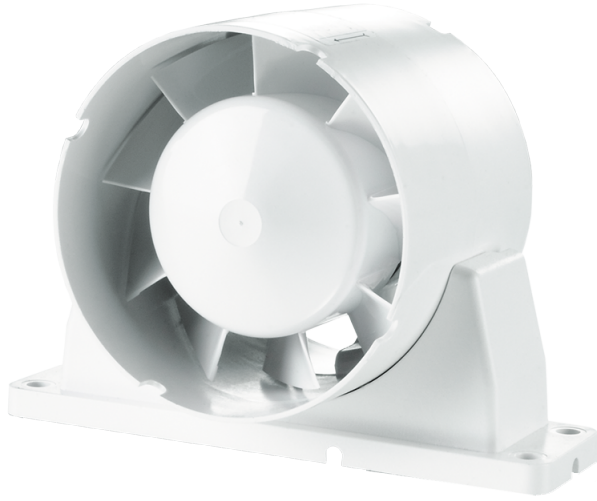


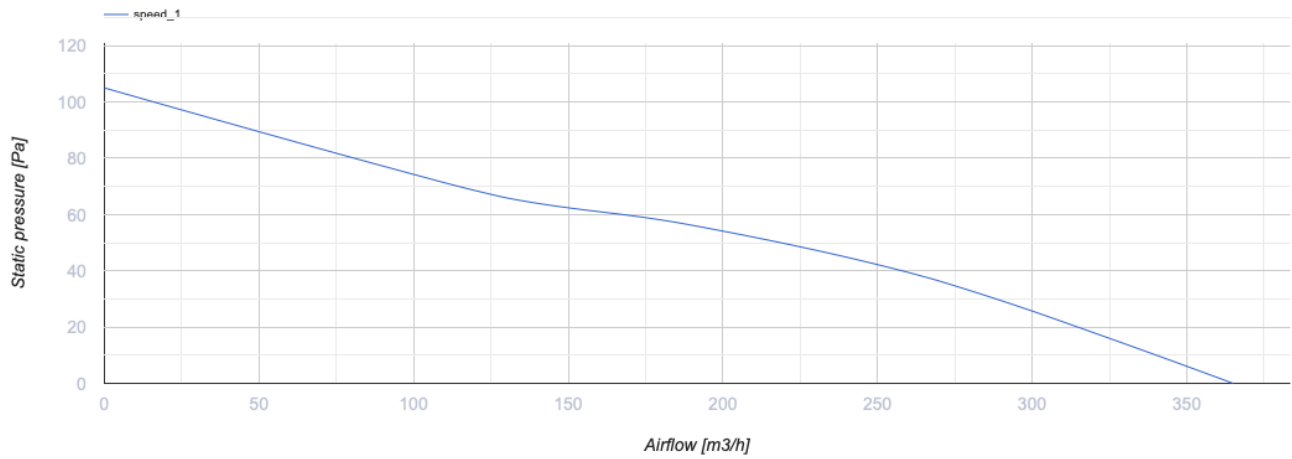
150 VKO1k L turbo

Axial inline fans, for exhaust or supply ventilation

- Maximum airflow: 365
- Sound pressure level LpA at 3 m: 42
- Motor type: AC
- Casing material: Plastic



	Unit of measurement	150 VKO1k L turbo
Connected air duct size	mm	150
Speed	-	1
Minimum supply voltage	V	220
Maximum supply voltage	V	240
Power supply frequency	Hz	50
Rated power	W	36
Unit current	A	0.16
Maximum airflow	m ³ /h	365
Sound pressure level LpA at 3 m	dB(A)	42
Weight	kg	0.58
Ambient air temperature min	°C	1
Ambient air temperature max	°C	40
Ingress protection rating	-	IPX4



Dimensions

ØD	Ød	B	B1	H	L	L1	L2	L3
150	59	200	184	162	100	28	45	29

