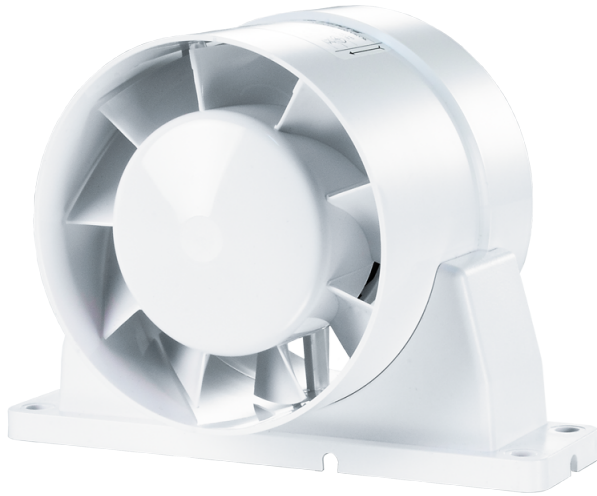


150 VKOk L

Axial inline fans, for exhaust or supply ventilation

- Maximum airflow: 298
- Sound pressure level LpA at 3 m: 40
- Motor type: AC
- Casing material: Plastic



	Unit of measurement	150 VKOk L
Connected air duct size	mm	150
Speed	-	1
Minimum supply voltage	V	220
Maximum supply voltage	V	240
Power supply frequency	Hz	50
Rated power	W	24
Unit current	A	0.13
Maximum airflow	m ³ /h	298
Sound pressure level LpA at 3 m	dB(A)	40
Weight	kg	0.8
Ambient air temperature min	°C	1
Ambient air temperature max	°C	40
Ingress protection rating	-	IPX4

Dimensions

ØD	ØD1	B	B1	H	L	L1	L2	L3
150	154	200	184	163	108	46	45	29

