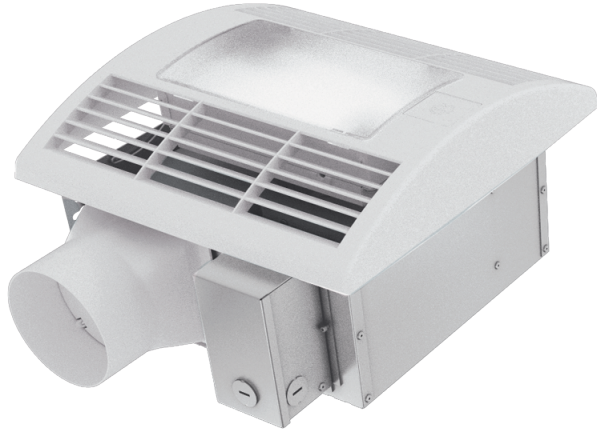


CBF LP 110 DC Light

Ceiling bathroom fans with integrated LED-light



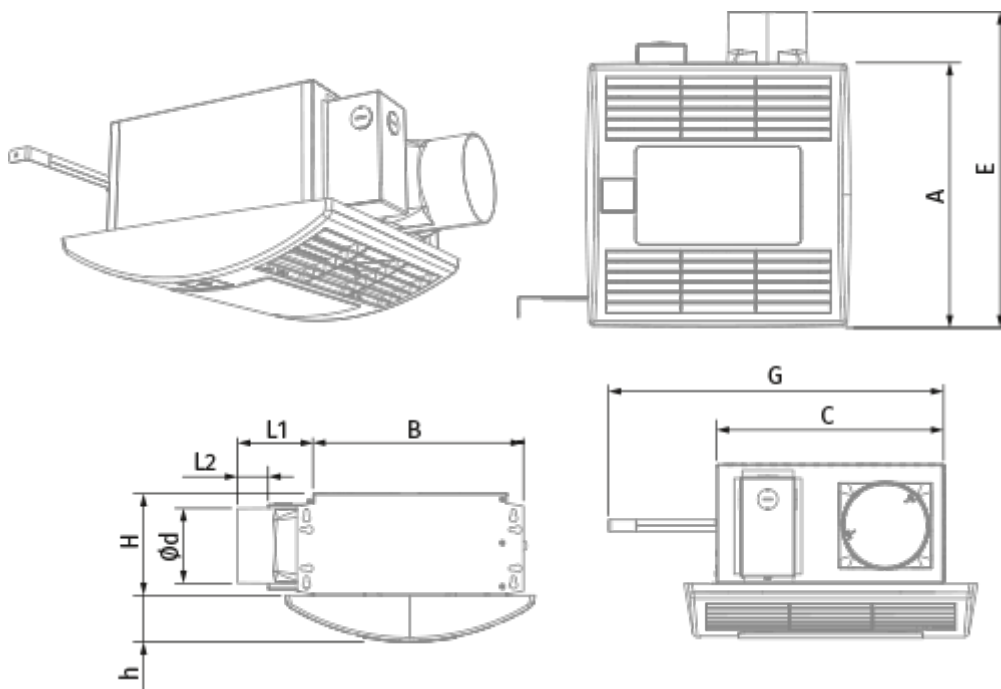
- Maximum airflow: 187
- Sound pressure level LpA at 3 m: 25
- Lighting
- Motor type: DC
- Control: Built-in control panel
- Casing material: Galvanized steel
- Backdraft protection: Backdraft damper
- Timer: Turn off timer, Turn on timer

	Unit of measurement	CBF LP 110 DC Light
Connected air duct size	mm	100
Phases	-	1
Minimum supply voltage	V	120
Maximum supply voltage	V	240
Power supply frequency	Hz	50/60
Rated power	W	19
Unit current	A	0.18 (0.3)
Maximum airflow	m ³ /h	187
Sound pressure level LpA at 3 m	dB(A)	25
Weight	kg	5.3
Ambient air temperature min	°C	1
Ambient air temperature max	°C	40
Ingress protection rating	-	IPX4
ErP compliance	-	2016
Cold - Specific energy consumption (SEC)	kWh/(m ² /a)	33.6
SEC Class Cold	-	B
Average - Specific energy consumption (SEC)	kWh/(m ² /a)	15.7
SEC Class Average	-	E
Warm - Specific energy consumption (SEC)	kWh/(m ² /a)	5.4
SEC Class Warm	-	F
Unit category	-	RVU

Type of ventilation unit	-	Unidirectional
Type of drive installed	-	Variable speed
Type of heat recovery system	-	None
Maximum flow rate	m ³ /h	90
Electric power input	W	14
Reference flow rate	m ³ /s	0.037
Reference pressure difference	Pa	50
Specific power input (SPI)	W/(m ³ /h)	0.109
Control typology	-	Clock control
Maximum external leakage rates	%	2.7
Cold - The annual electricity consumption (AEC)	kWh/a	123
Average - The annual electricity consumption (AEC)	kWh/a	123
Warm - Jährlicher Stromverbrauch (JSV)	kWh/a	123
Cold - The annual heating saved (AHS)	kWh/a	3667
The annual heating saved (AHS) Average	kWh/a	1874
The annual heating saved (AHS) Warm	kWh/a	848
Sound power level	dB(A)	49
Declared typology	-	RVU UVU

Dimensions

d	L1	L2	A	B	C	E	H	h	G
98	100	40.5	330	278	255	395	134	57	max 620



Accessories



Speed control switches

Name	Photo	Description
P2-10		Turning fan on/off and speed switching for multispeed fans


Sensors

Name	Photo	Description
TH CBF		Humidity sensor


Other accessories

Name	Photo	Description
MV 102 bVs N		Supply and exhaust metal hoods
MV 102 V ASA		Supply and exhaust hoods

Flexible ducts

Name	Photo	Description
Polyvent 660		Flexible PVC film non-insulated air ducts with steel wire frame (65 µm)

Other accessories

Name	Photo	Description
CB 60-110		The clamps are designed for quick and reliable mounting and connection of various round ventilation system components. Clamps are the stainless steel quick-release clamps equipped with a stainless steel swing screw