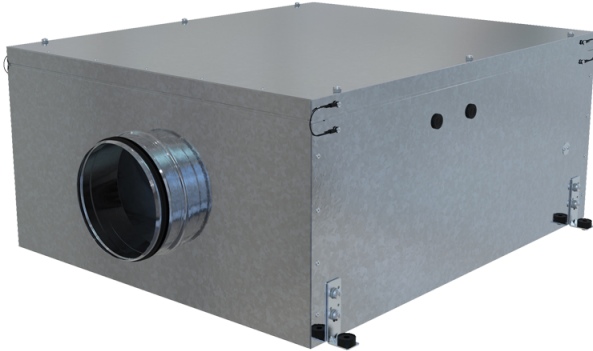


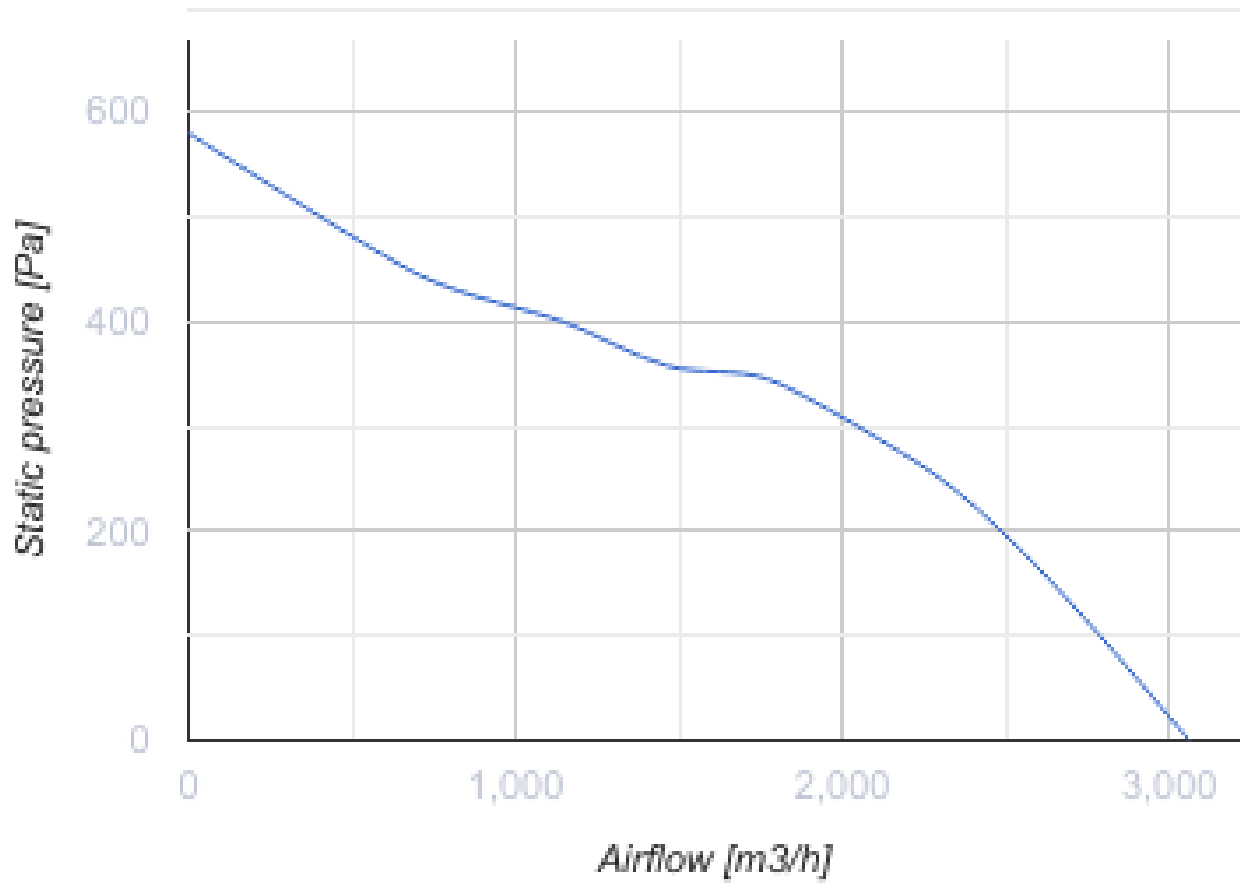
DuoVent 355 EC

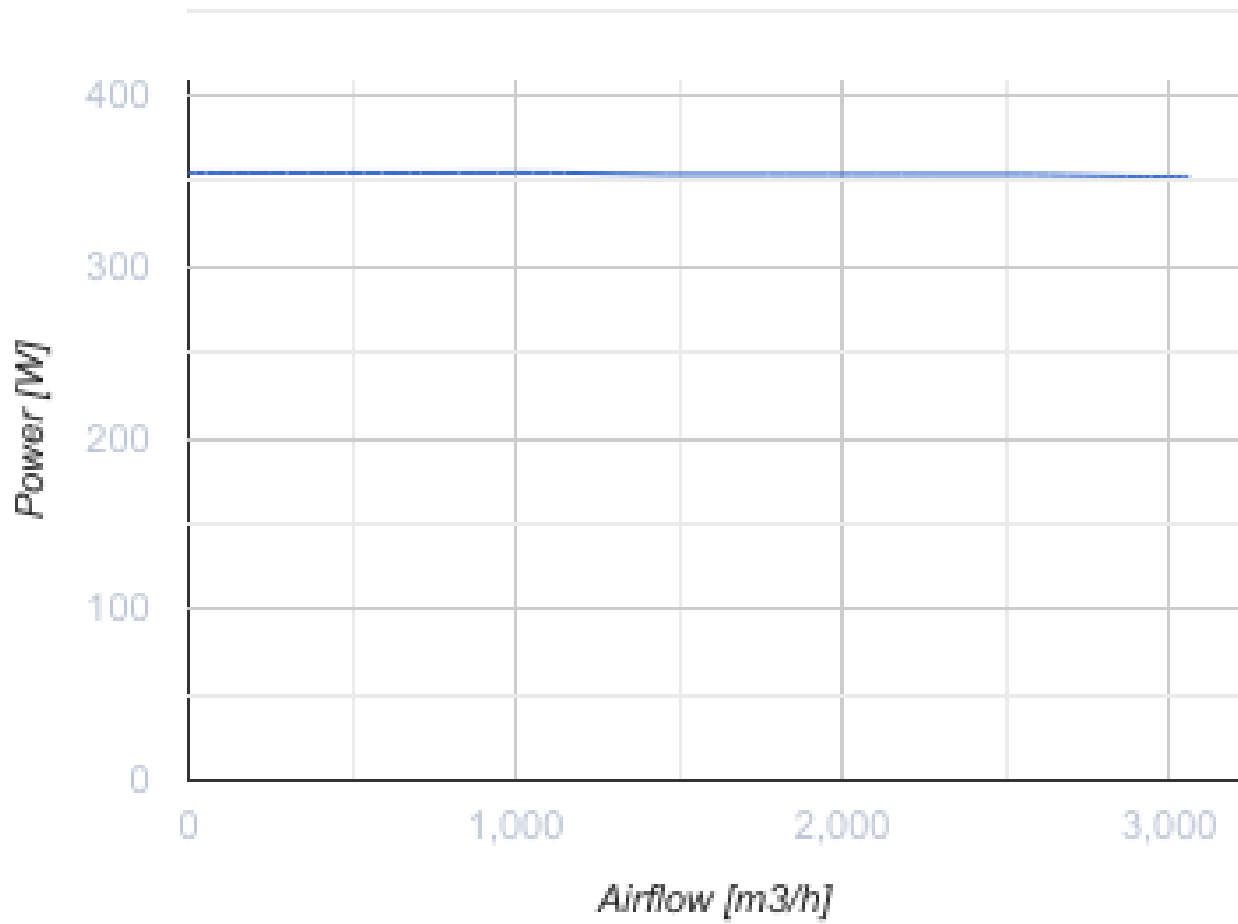
Centrifugal fans in a metal casing for round air ducts

- Maximum airflow: 3060
- Sound pressure level LpA at 3 m: 45
- Sound insulation
- Motor type: EC
- Impeller type: Mixed-flow
- Casing material: Galvanized steel



	Unit of measurement	DuoVent 355 EC
Connected air duct size	mm	355
Speed	-	1
Minimum supply voltage	V	220
Maximum supply voltage	V	240
Power supply frequency	Hz	50/60
Rated power	W	354
Unit current	A	1.57
Maximum airflow	m ³ /h	3060
Sound pressure level LpA at 3 m	dB(A)	45
Weight	kg	97
Transported air temperature (max)	°C	55
Transported air temperature (min)	°C	-25
Ingress protection rating	-	IPX4
Ingress protection rating of the drive	-	IP44





Dimensions

D	L	L1	H	W	W1
354	1334	1170	520	1092	1010



Ecodesign

Trademark	Vents
Model	DuoVent 355 EC
Type of drive installed	External MSD or VSD
Type of heat recovery system	None
Nominal flow rate (m ³ /s)	0.634
Nominal external pressure (Pa)	254
Maximum external leakage rates (%)	2.7
Static efficiency (%)	46.4
Declared typology	NRVU UVU
Effective electric power input (kW)	0.354
Sound power level (dB(A))	65