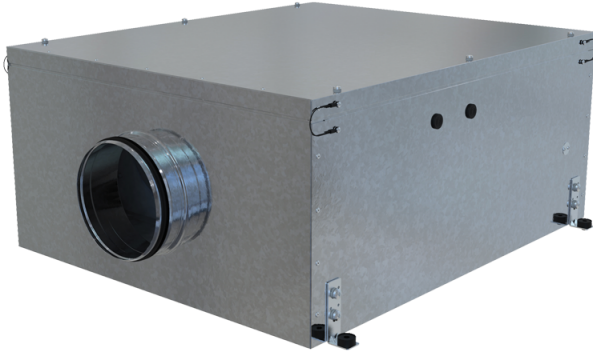


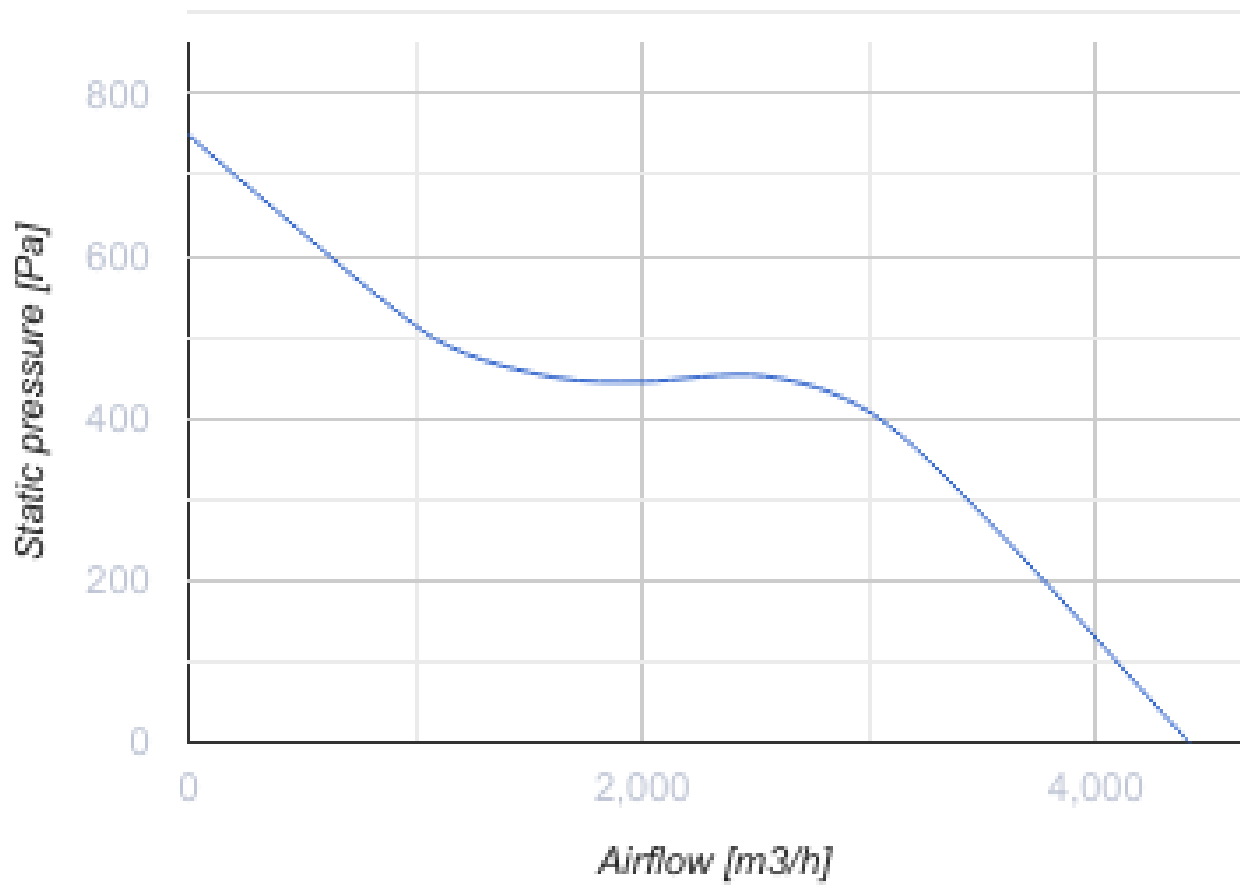
# DuoVent 400 EC

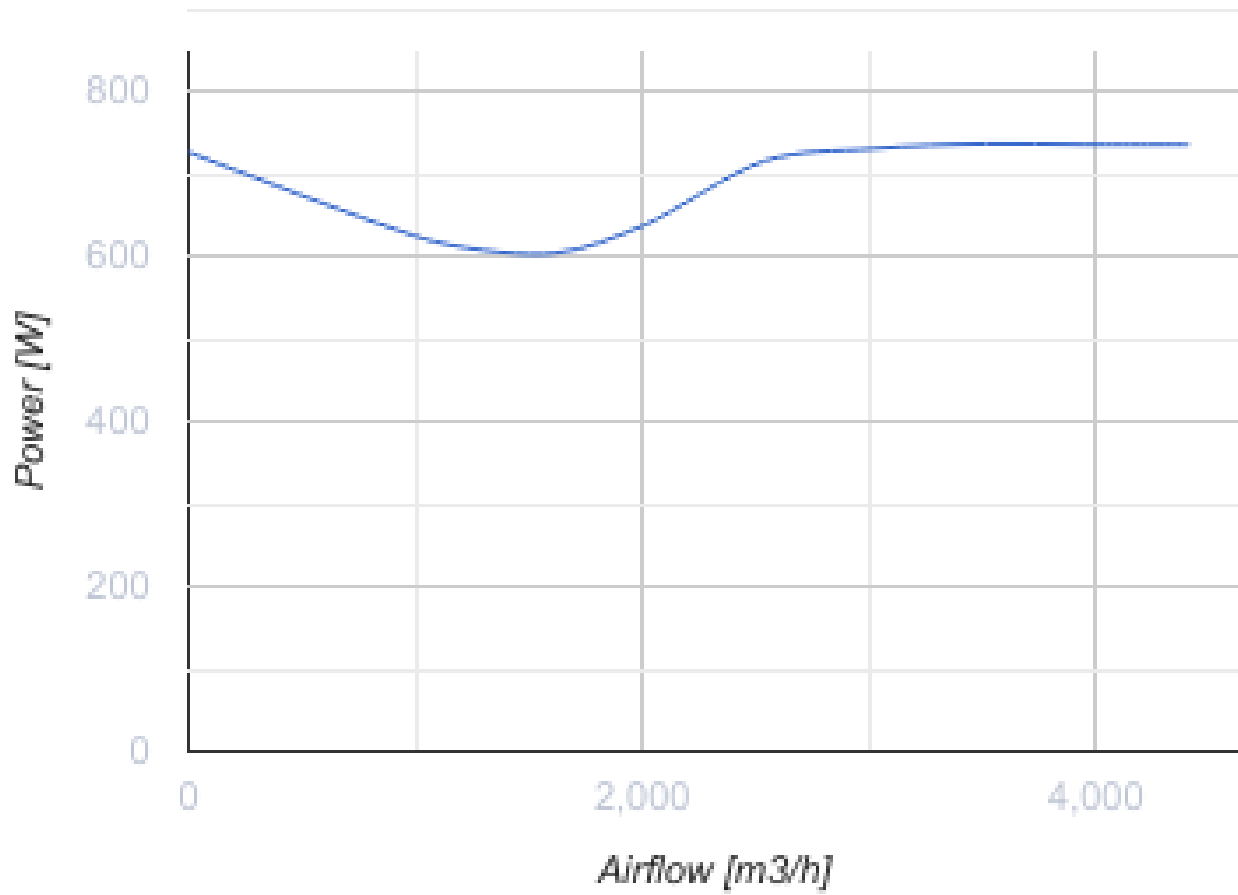
Centrifugal fans in a metal casing for round air ducts

- Maximum airflow: 4410
- Sound pressure level LpA at 3 m: 48
- Sound insulation
- Motor type: EC
- Impeller type: Mixed-flow
- Casing material: Galvanized steel



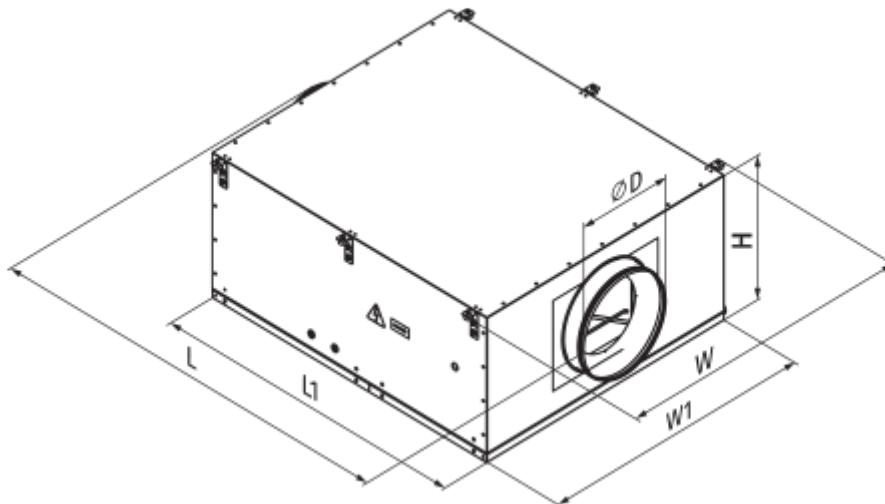
	Unit of measurement	DuoVent 400 EC
Connected air duct size	mm	400
Speed	-	1
Minimum supply voltage	V	220
Maximum supply voltage	V	240
Power supply frequency	Hz	50/60
Rated power	W	737
Unit current	A	4.65
Maximum airflow	m <sup>3</sup> /h	4410
Sound pressure level LpA at 3 m	dB(A)	48
Weight	kg	129
Transported air temperature (max)	°C	55
Transported air temperature (min)	°C	-25
Ingress protection rating	-	IPX4
Ingress protection rating of the drive	-	IP44





### Dimensions

D	L	L1	H	W	W1
399	1358	1194	551	1182	1101



## Ecodesign

Trademark	Vents
Model	DuoVent 400 EC
Type of drive installed	External MSD or VSD
Type of heat recovery system	None
Nominal flow rate (m <sup>3</sup> /s)	0.837
Nominal external pressure (Pa)	406
Maximum external leakage rates (%)	2.7
Static efficiency (%)	47.4
Declared typology	NRVU UVU
Effective electric power input (kW)	0.731
Sound power level (dB(A))	80