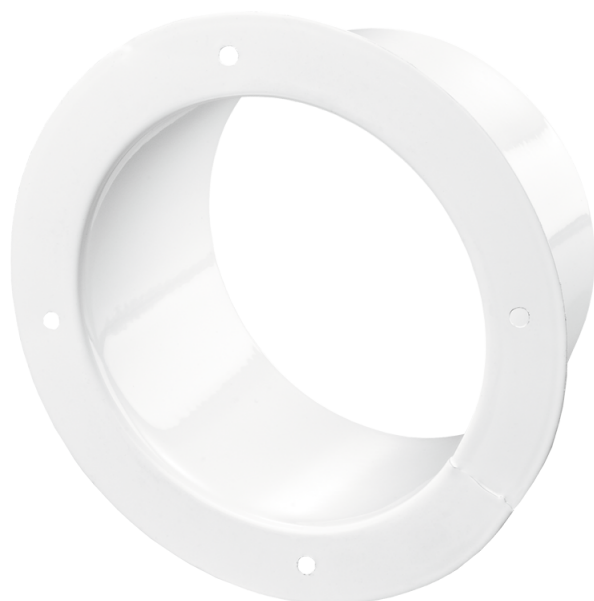


## FM 250



Flanges made of special steel with polymeric coating for connection of flexible and plastic air ducts of the respective diameter

- Casing material: Coated steel

|                         | Unit of measurement | FM 250 |
|-------------------------|---------------------|--------|
| Connected air duct size | mm                  | 250    |

### Dimensions

| D   | D1  | L  |
|-----|-----|----|
| 250 | 286 | 62 |

