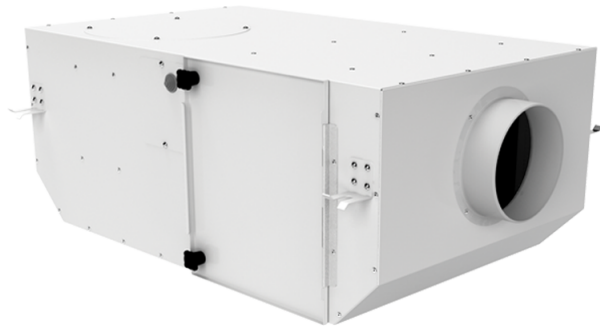


KSV 100

G4/H13/Carbon



Centrifugal fans in sound-insulated casing

- Maximum airflow: 170
- Sound pressure level LpA at 3 m: 23
- Filter: G4+H13+Carbon
- Sound insulation
- Motor type: AC
- Impeller type: Centrifugal backward curved blades
- Casing material: Coated steel
- Installation in any position

	Unit of measurement	KSV 100 G4/H13/Carbon
Connected air duct size	mm	100
Speed	-	1
Minimum supply voltage	V	230
Maximum supply voltage	V	230
Power supply frequency	Hz	50
Rated power	W	52
Unit current	A	0.27
Maximum airflow	m ³ /h	170
Sound pressure level LpA at 3 m	dB(A)	23
Weight	kg	14.86
Filter	-	G4+H13+Carbon
Transported air temperature (max)	°C	40
Transported air temperature (min)	°C	-25
Ingress protection rating	-	IPX4
Ingress protection rating of the drive	-	IP44

Dimensions

D	L	H	B	L1	B1	L2	B2
100	705	250	415	805	508	650	458

