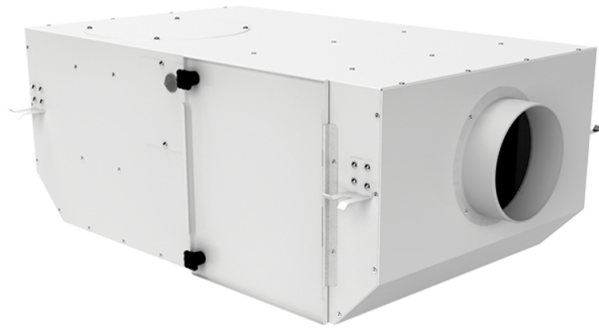


KSV 150 Duo G4/F8/Carbon



Centrifugal fans in sound-insulated casing

- Maximum airflow: 390
- Sound pressure level LpA at 3 m: 27
- Filter: G4+F8+Carbon
- Sound insulation
- Motor type: AC
- Impeller type: Centrifugal backward curved blades
- Casing material: Coated steel
- Installation in any position

	Unit of measurement	KSV 150 Duo G4/F8/Carbon	
Connected air duct size	mm	150	
Speed	-	2	
Minimum supply voltage	V	230	
Maximum supply voltage	V	230	
Power supply frequency	Hz	50	
Rated power	W	89	115
Unit current	A	0.41	0.55
Maximum airflow	m ³ /h	300	390
Sound pressure level LpA at 3 m	dB(A)	16	27
Weight	kg	17.08	
Filter	-	G4+F8+Carbon	
Transported air temperature (max)	°C	40	
Transported air temperature (min)	°C	-25	
Ingress protection rating	-	IPX4	
Ingress protection rating of the drive	-	IP44	

Dimensions

D	L	H	B	L1	B1	L2	B2
150	735	300	440	835	533	680	483

