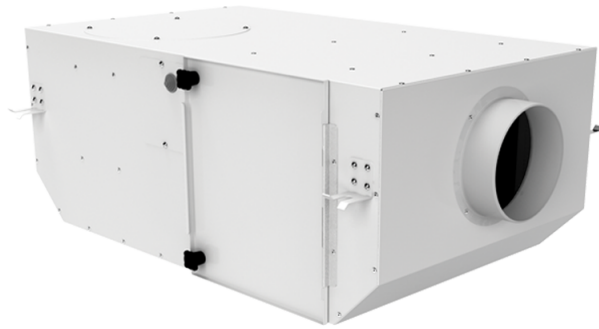


# KSV 150 Duo Q G4/H13/Carbon



Centrifugal fans in sound-insulated casing

- Maximum airflow: 285
- Sound pressure level LpA at 3 m: 25
- Filter: G4+H13+Carbon
- Sound insulation
- Motor type: AC
- Impeller type: Centrifugal backward curved blades
- Casing material: Coated steel
- Installation in any position

	Unit of measurement	KSV 150 Duo Q G4/H13/Carbon	
Connected air duct size	mm	150	
Speed	-	2	
Minimum supply voltage	V	230	
Maximum supply voltage	V	230	
Power supply frequency	Hz	50	
Rated power	W	40	48
Unit current	A	0.18	0.21
Maximum airflow	m <sup>3</sup> /h	205	285
Sound pressure level LpA at 3 m	dB(A)	15	25
Weight	kg	14.87	
Filter	-	G4+H13+Carbon	
Transported air temperature (max)	°C	40	
Transported air temperature (min)	°C	-25	
Ingress protection rating	-	IPX4	
Ingress protection rating of the drive	-	IP44	

## Dimensions

D	L	H	B	L1	B1	L2	B2
150	705	250	415	805	508	650	458

