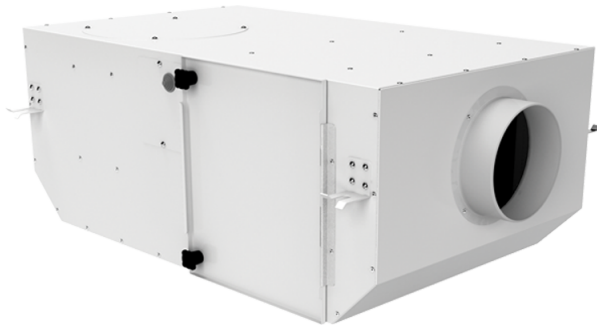


# KSV 150 G4



Centrifugal fans in sound-insulated casing

- Maximum airflow: 440
- Sound pressure level LpA at 3 m: 27
- Filter: G4
- Sound insulation
- Motor type: AC
- Impeller type: Centrifugal backward curved blades
- Casing material: Coated steel
- Installation in any position

	Unit of measurement	KSV 150 G4
Connected air duct size	mm	150
Speed	-	1
Minimum supply voltage	V	230
Maximum supply voltage	V	230
Power supply frequency	Hz	50
Rated power	W	107
Unit current	A	0.49
Maximum airflow	m <sup>3</sup> /h	440
Sound pressure level LpA at 3 m	dB(A)	27
Weight	kg	15.92
Filter	-	G4
Transported air temperature (max)	°C	40
Transported air temperature (min)	°C	-25
Ingress protection rating	-	IPX4
Ingress protection rating of the drive	-	IP44
ErP compliance	-	2016, 2018
Cold - Specific energy consumption (SEC)	kWh/(m <sup>2</sup> /a)	50.6
SEC Class Cold	-	A+
Average - Specific energy consumption (SEC)	kWh/(m <sup>2</sup> /a)	23.5
SEC Class Average	-	C
Warm - Specific energy consumption (SEC)	kWh/(m <sup>2</sup> /a)	8

SEC Class Warm	-	F
Unit category	-	RVU
Type of ventilation unit	-	Unidirectional
Type of drive installed	-	Multi-speed
Type of heat recovery system	-	None
Maximum flow rate	m <sup>3</sup> /h	270
Electric power input	W	97
Reference flow rate	m <sup>3</sup> /s	0.053
Reference pressure difference	Pa	50
Specific power input (SPI)	W/(m <sup>3</sup> /h)	0.359
Control typology	-	Local demand control
Maximum external leakage rates	%	2.7
Cold - The annual electricity consumption (AEC)	kWh/a	190
Average - The annual electricity consumption (AEC)	kWh/a	190
Warm - Jährlicher Stromverbrauch (JSV)	kWh/a	190
Cold - The annual heating saved (AHS)	kWh/a	5536
The annual heating saved (AHS) Average	kWh/a	2830
The annual heating saved (AHS) Warm	kWh/a	1280
Declared typology	-	RVU UVU
Sound power level	dB(A)	47

## Dimensions

D	L	H	B	L1	B1	L2	B2
150	735	300	440	835	533	680	483

