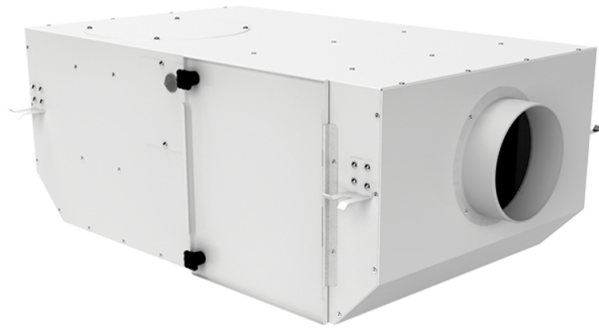


# KSV 150

## G4/H13/Carbon



Centrifugal fans in sound-insulated casing

- Maximum airflow: 360
- Sound pressure level LpA at 3 m: 27
- Filter: G4+H13+Carbon
- Sound insulation
- Motor type: AC
- Impeller type: Centrifugal backward curved blades
- Casing material: Polypropylene/Thermoplastic elastomer
- Installation in any position

	Unit of measurement	KSV 150 G4/H13/Carbon
Connected air duct size	mm	150
Speed	-	1
Minimum supply voltage	V	230
Maximum supply voltage	V	230
Power supply frequency	Hz	50
Rated power	W	102
Unit current	A	0.48
Maximum airflow	m <sup>3</sup> /h	360
Sound pressure level LpA at 3 m	dB(A)	27
Weight	kg	17.08
Filter	-	G4+H13+Carbon
Transported air temperature (max)	°C	40
Transported air temperature (min)	°C	-25
Ingress protection rating	-	IPX4
Ingress protection rating of the drive	-	IP44

## Dimensions

D	L	H	B	L1	B1	L2	B2
150	735	300	440	835	533	680	483

