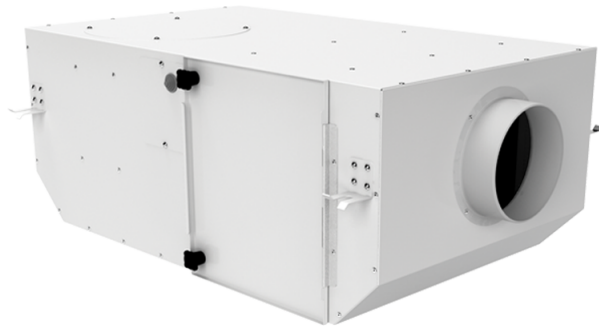


KSV 150 Q G4/Carbon

Centrifugal fans in sound-insulated casing

- Maximum airflow: 360
- Sound pressure level LpA at 3 m: 25
- Filter: G4+Carbon
- Sound insulation
- Motor type: AC
- Impeller type: Centrifugal backward curved blades
- Casing material: Coated steel
- Installation in any position



	Unit of measurement	KSV 150 Q G4/Carbon
Connected air duct size	mm	150
Speed	-	1
Minimum supply voltage	V	230
Maximum supply voltage	V	230
Power supply frequency	Hz	50
Rated power	W	63
Unit current	A	0.29
Maximum airflow	m ³ /h	360
Sound pressure level LpA at 3 m	dB(A)	25
Filter	-	G4+Carbon
Transported air temperature (max)	°C	40
Transported air temperature (min)	°C	-25
Ingress protection rating	-	IPX4
Ingress protection rating of the drive	-	IP44

Dimensions

D	L	H	B	L1	B1	L2	B2
150	705	250	415	805	508	650	458

