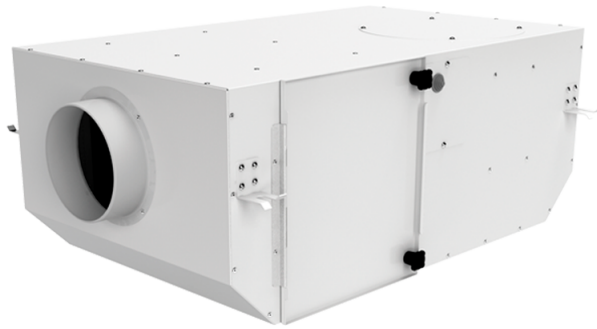


KSV 200 Duo G4/F8/Carbon

Centrifugal inline fans with forward curved blades in sound-insulated casing with filters

- Sound pressure level LpA at 3 m: 38
- Filter: G4+F8+Carbon
- Sound-insulated casing
- Impeller type: Centrifugal impeller with backward curved blades
- Casing material: Coated steel
- Installation in any position



	Unit of measurement	KSV 200 Duo G4/F8/Carbon	
Speed	-	1	2
Connected air duct size	mm	200	
Phases	-	1	
Minimum supply voltage	V	230	
Maximum supply voltage	V	230	
Power supply frequency	Hz	50	
Rated power	W	103	121
Unit current	A	0.45	0.57
Maximum airflow	m ³ /h	380	590
Rotation speed at 50hz	-	700	1200
Sound pressure level LpA at 3 m	dB(A)	22	38
Weight	kg	20.32	
Filter	-	G4+F8+Carbon	
Transported air temperature (max)	°C	40	
Transported air temperature (min)	°C	-25	
Ingress protection rating	-	IPX4	
Ingress protection rating of the drive	-	IP44	
Impeller material	-	Plastic	

Dimensions

D	L	H	B	L1	B1	L2	B2
200	735	300	605	835	698	680	648

