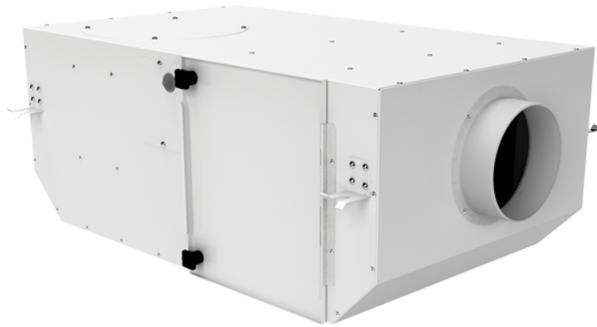


KSV 200 Duo G4/H13

Centrifugal fans in sound-insulated casing



- Maximum airflow: 525
- Sound pressure level LpA at 3 m: 38
- Filter: G4+H13
- Sound insulation
- Motor type: AC
- Impeller type: Centrifugal backward curved blades
- Casing material: Coated steel
- Installation in any position

	Unit of measurement	KSV 200 Duo G4/H13	
Connected air duct size	mm	200	
Speed	-	2	
Minimum supply voltage	V	230	
Maximum supply voltage	V	230	
Power supply frequency	Hz	50	
Rated power	W	97	119
Unit current	A	0.43	0.55
Maximum airflow	m ³ /h	350	525
Sound pressure level LpA at 3 m	dB(A)	22	38
Weight	kg	19.1	
Filter	-	G4+H13	
Transported air temperature (max)	°C	40	
Transported air temperature (min)	°C	-25	
Ingress protection rating	-	IPX4	
Ingress protection rating of the drive	-	IP44	
ErP compliance	-	2016, 2018	
Cold - Specific energy consumption (SEC)	kWh/(m ² /a)	48.9	
SEC Class Cold	-	A+	
Average - Specific energy consumption (SEC)	kWh/(m ² /a)	21.9	
SEC Class Average	-	D	
Warm - Specific energy consumption (SEC)	kWh/(m ² /a)	6.4	

SEC Class Warm	-	F
Unit category	-	RVU
Type of ventilation unit	-	Unidirectional
Type of drive installed	-	2-speed
Type of heat recovery system	-	None
Maximum flow rate	m ³ /h	326
Electric power input	W	112
Reference flow rate	m ³ /s	0.063
Reference pressure difference	Pa	50
Specific power input (SPI)	W/(m ³ /h)	0.344
Control typology	-	Local demand control
Maximum external leakage rates	%	2.7
Cold - The annual electricity consumption (AEC)	kWh/a	257
Average - The annual electricity consumption (AEC)	kWh/a	257
Warm - Jährlicher Stromverbrauch (JSV)	kWh/a	257
Cold - The annual heating saved (AHS)	kWh/a	5536
The annual heating saved (AHS) Average	kWh/a	2830
The annual heating saved (AHS) Warm	kWh/a	1280
Declared typology	-	RVU UVU
Sound power level	dB(A)	58

Dimensions

D	L	H	B	L1	B1	L2	B2
200	735	300	605	835	698	680	648

