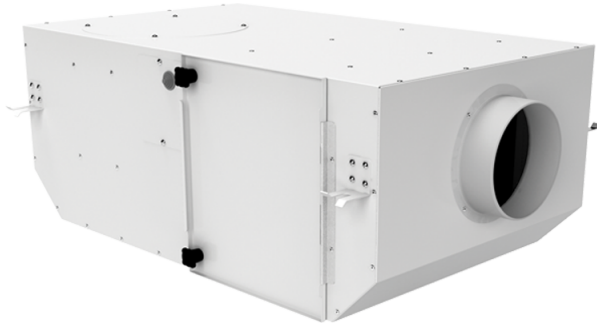


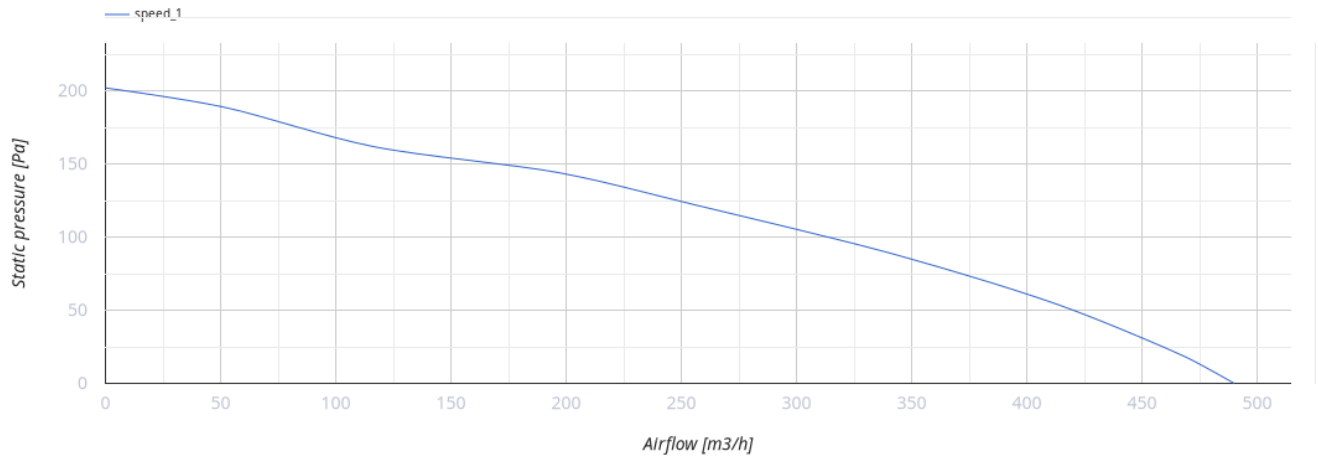
KSV 200 G4/H13



Centrifugal fans in sound-insulated casing

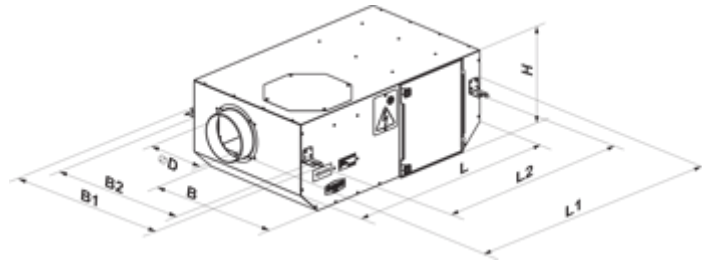
- Maximum airflow: 490
- Sound pressure level LpA at 3 m: 38
- Filter: G4+H13
- Sound insulation
- Motor type: AC
- Impeller type: Centrifugal backward curved blades
- Casing material: Polypropylene/Thermoplastic elastomer
- Installation in any position

	Unit of measurement	KSV 200 G4/H13
Connected air duct size	mm	200
Speed	-	1
Minimum supply voltage	V	230
Maximum supply voltage	V	230
Power supply frequency	Hz	50
Rated power	W	115
Unit current	A	0.52
Maximum airflow	m ³ /h	490
Sound pressure level LpA at 3 m	dB(A)	38
Weight	kg	19.1
Filter	-	G4+H13
Transported air temperature (max)	°C	40
Transported air temperature (min)	°C	-25
Ingress protection rating	-	IPX4
Ingress protection rating of the drive	-	IP44

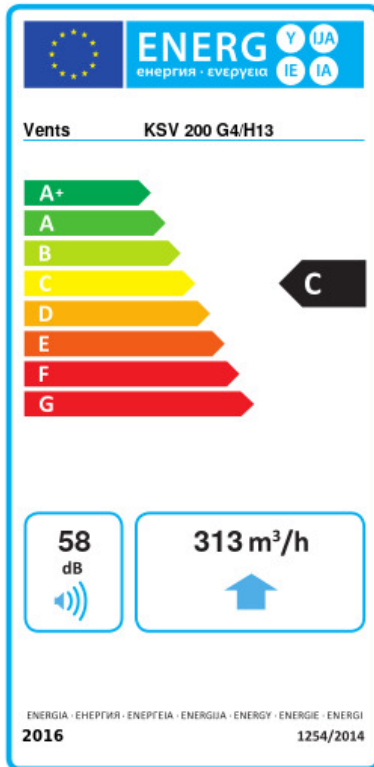


Dimensions

D	L	H	B	L1	B1	L2	B2
200	735	300	605	835	698	680	648



Ecodesign



Trademark	Vents					
Model	KSV 200 G4/H13					
Specific energy consumption (SEC) (kWh/(m ² /a))	Cold		Average		Warm	
	-51.1	A+	-24.1	C	-8.6	F
Type of ventilation unit	Unidirectional					
Type of drive installed	Multi-speed					
Type of heat recovery system	None					
Maximum flow rate (m ³ /h)	313					
Electric power input (W)	100					
Reference flow rate (m ³ /s)	0.061					
Reference pressure difference (Pa)	50					
Specific power input (SPI) (W/(m ³ /h))	0.319					
Control typology	Local demand control					
Maximum external leakage rates (%)	2.7					
Declared typology	RVU UVU					
Sound power level (dB(A))	58					
The annual electricity consumption (AEC) (kWh/a)	Cold		Average		Warm	
	169		169		169	
The annual heating saved (AHS) (kWh/a)	Cold		Average		Warm	
	5536		2830		1280	