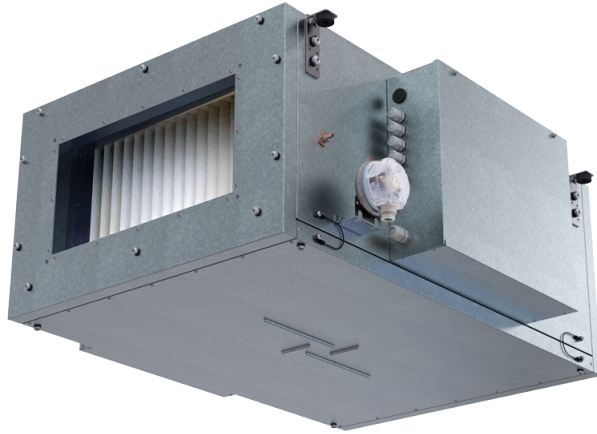


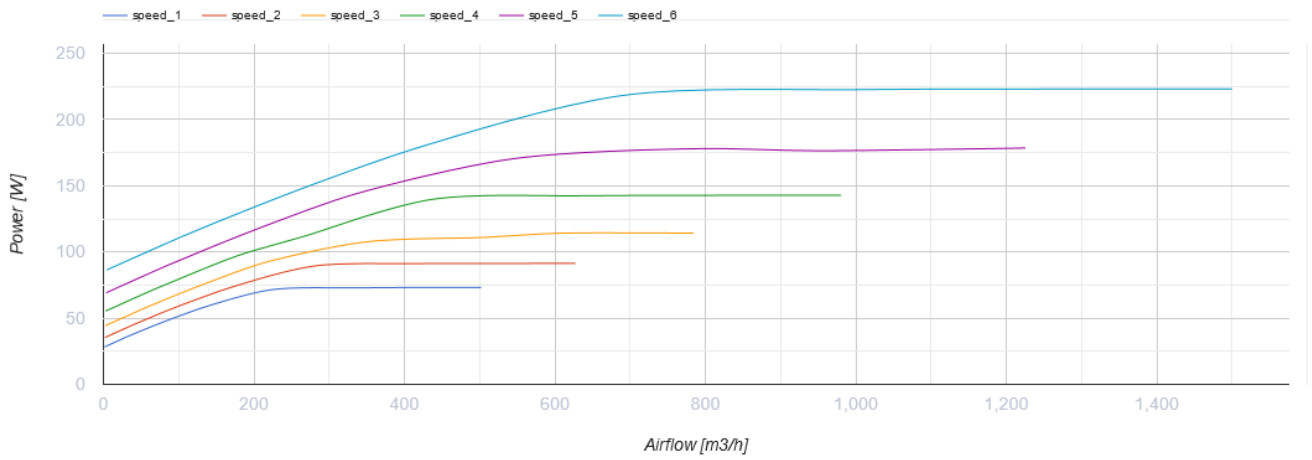
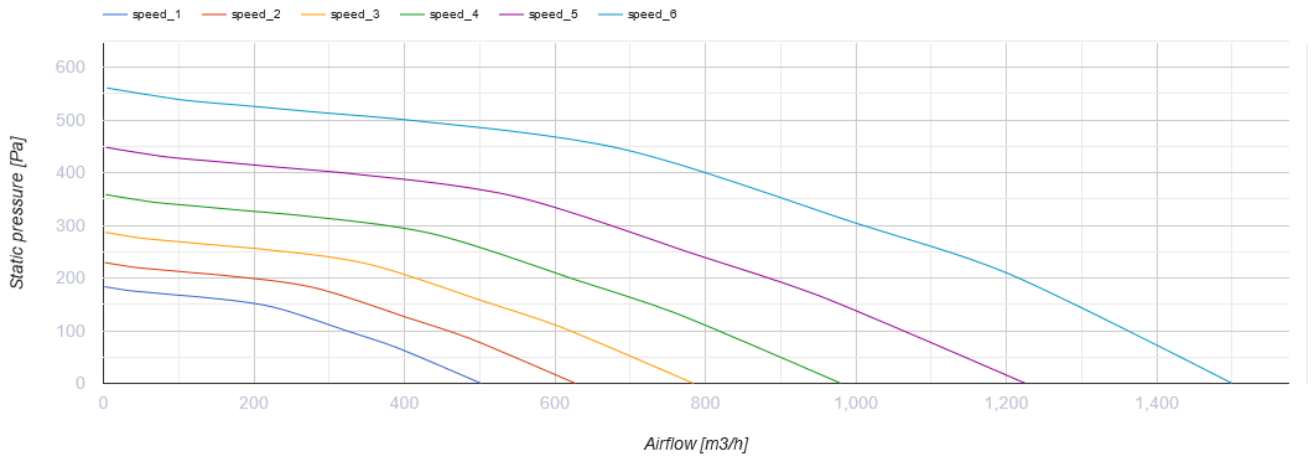
MPA 1500 E-18.0 EC A31



Air supply units in the sound- and heat-insulated casing

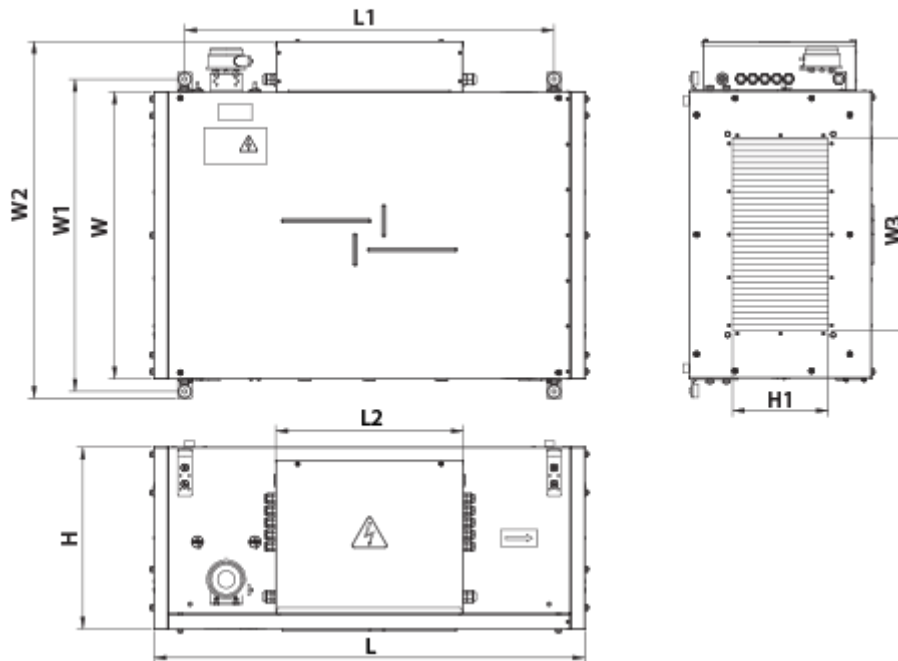
- Power of electrical reheater: 18000
- Maximum airflow: 1500
- Sound pressure level LpA at 3 m: 46
- Filter: Coarse 90%/G4 (опція ePM1 70%/F7)
- Sound insulation
- Motor type: EC
- Reheater: Electric
- BMS protocol: ModBus
- Control: Wired control panel
- Casing material: Aluzinc steel

	Unit of measurement	MPA 1500 E-18.0 EC A31
Connected air duct size	mm	500x250
Minimum supply voltage	V	400
Maximum supply voltage	V	400
Power supply frequency	Hz	50
Rated power	W	223
Power of electrical reheater	W	18000
Unit current	A	29.2
Maximum airflow	m ³ /h	1500
Sound pressure level LpA at 3 m	dB(A)	46
Weight	kg	35
Filter	-	Coarse 90%/G4 (опція ePM1 70%/F7)
Transported air temperature (max)	°C	40
Transported air temperature (min)	°C	-30
Ingress protection rating	-	IP22
Ingress protection rating of the drive	-	IP44





Dimensions

H	H1	L	L1	W	W1	W2	W3
440	250	900	770	700	754	847	500



Accessories


Other accessories

Name	Photo	Description
SF 536x316x48 G4		Panel filter G4
SF 536x316x48 F7		F7 panel filter

For rectangular ducts

Name	Photo	Description
VVG 500x250		Flexible anti-vibration connector

For rectangular ducts



Name	Photo	Description
SR 500x250		The plate silencer is applied for noise absorption produced during the ventilating equipment operation and spread along the ducting systems

Airflow regulators

Name	Photo	Description
------	-------	-------------

RRV 500x250		Air flow controllers
-----------------------------	---	----------------------

Electric actuators

Name	Photo	Description
Belimo TF230		The actuators are designed for controlling air dampers with cross section up to 0.4 m ² performing protection functions
Belimo TF24		The actuators are designed for controlling air dampers with cross section up to 0.4 m ² performing protection functions