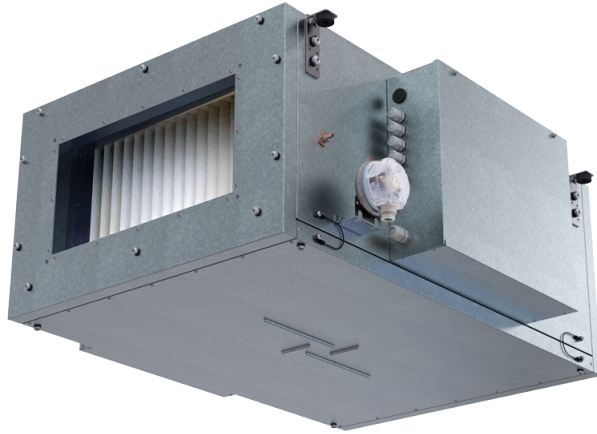


# MPA 1500 E-9.0 EC A31



Air supply units in the sound- and heat-insulated casing

- Power of electrical reheater: 9000
- Maximum airflow: 1500
- Sound pressure level LpA at 3 m: 46
- Filter: Coarse 90% / G4 (option ePM1 70% / F7)
- Sound insulation
- Motor type: EC
- Reheater: Electric
- BMS protocol: ModBus
- Control: Wired control panel
- Casing material: Aluzinc steel

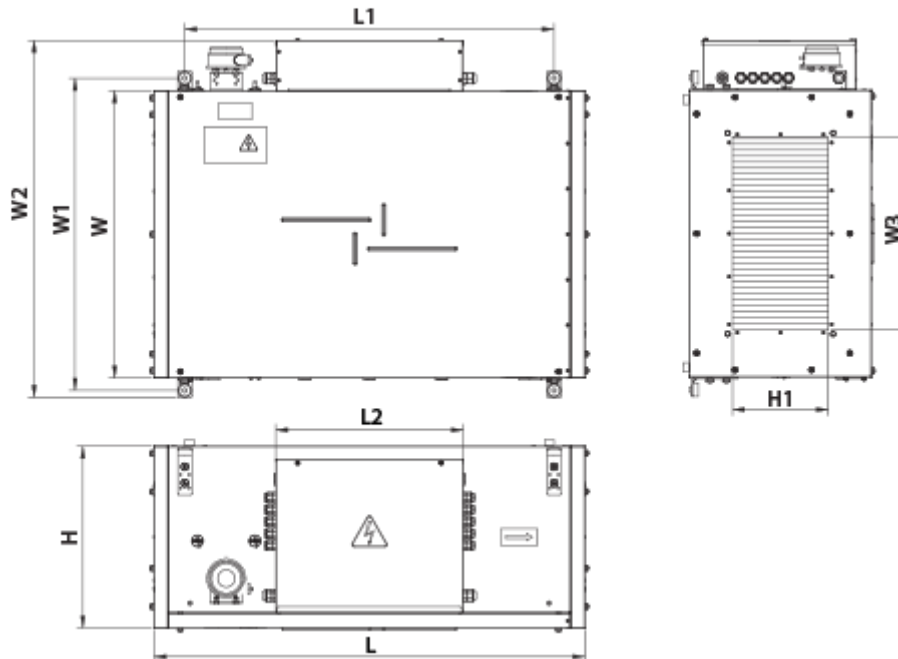
	Unit of measurement	MPA 1500 E-9.0 EC A31
Connected air duct size	mm	500x250
Minimum supply voltage	V	400
Maximum supply voltage	V	400
Power supply frequency	Hz	50
Rated power	W	223
Power of electrical reheater	W	9000
Unit current	A	14.8
Maximum airflow	m <sup>3</sup> /h	1500
Sound pressure level LpA at 3 m	dB(A)	46
Weight	kg	35
Filter	-	Coarse 90% / G4 (option ePM1 70% / F7)
Transported air temperature (max)	°C	40
Transported air temperature (min)	°C	-30
Ingress protection rating	-	IP22
Ingress protection rating of the drive	-	IP44







## Dimensions

H	H1	L	L1	W	W1	W2	W3
440	250	900	770	700	754	847	500




## Accessories

### Other accessories

Name	Photo	Description
SF 536x316x48 G4		Panel filter G4
SF 536x316x48 F7		F7 panel filter

### For rectangular ducts

Name	Photo	Description
<a href="#">VVG 500x250</a>		Flexible anti-vibration inserts for round air ducts

### For rectangular ducts



Name	Photo	Description
------	-------	-------------

<a href="#">SR 500x250</a>		Plate silencer for installation in rectangular ducts
----------------------------	---	--

### Airflow regulators

Name	Photo	Description
<a href="#">RRV 500x250</a>		Air flow controllers

### Electric actuators

Name	Photo	Description
<a href="#">Belimo TF230</a>		The actuators are designed for controlling air dampers with cross section up to 0.4 m <sup>2</sup> performing protection functions
<a href="#">Belimo TF24</a>		The actuators are designed for controlling air dampers with cross section up to 0.4 m <sup>2</sup> performing protection functions