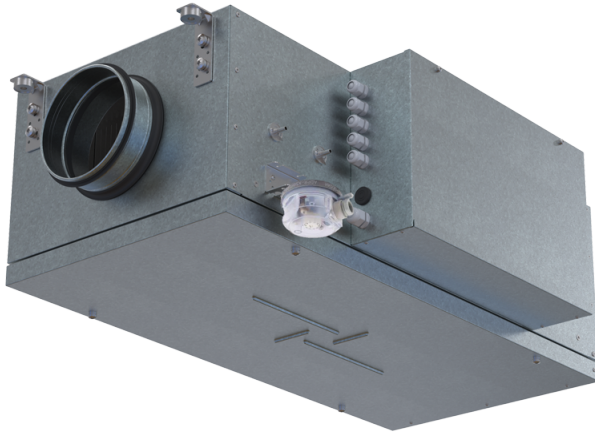


# MPA 400 E-3.3 EC A31



Air supply units in the sound- and heat-insulated casing

- Power of electrical reheater: 3300
- Maximum airflow: 430
- Sound pressure level LpA at 3 m: 31
- Filter: Coarse 90% / G4 (option ePM1 70% / F7)
- Sound insulation
- Motor type: EC
- Reheater: Electric
- BMS protocol: ModBus
- Control: Wired control panel
- Casing material: Aluzinc steel

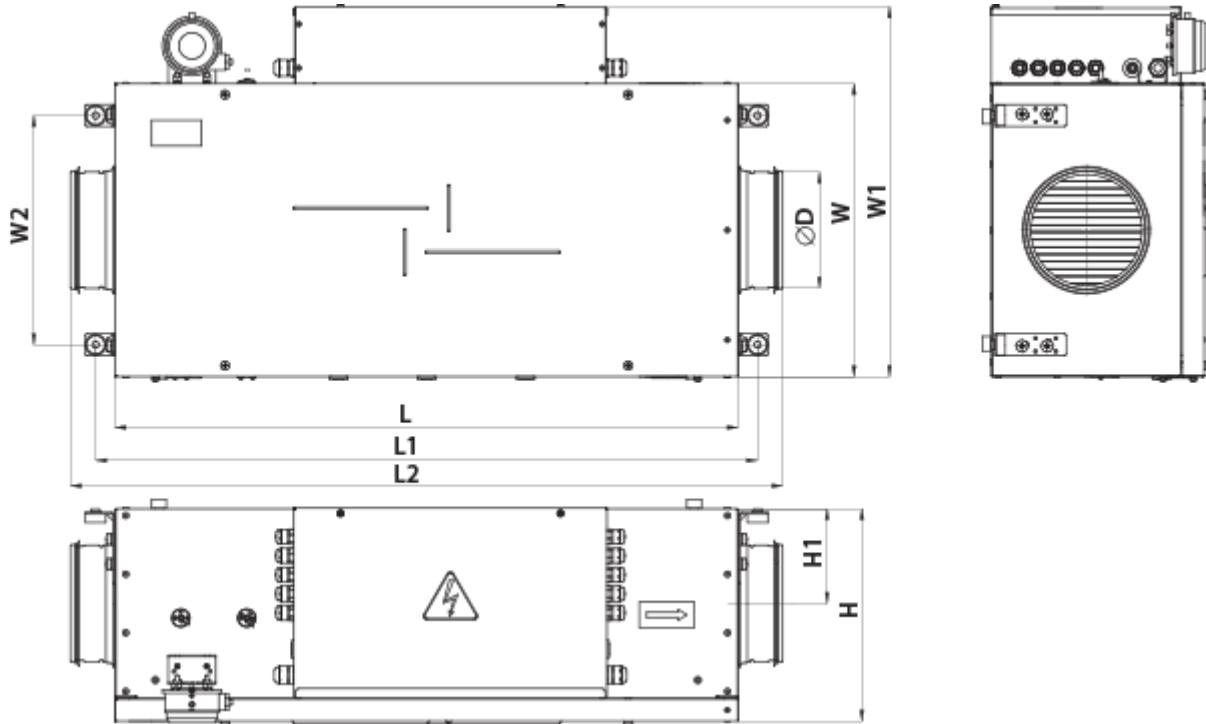
	Unit of measurement	MPA 400 E-3.3 EC A31
Connected air duct size	mm	200
Minimum supply voltage	V	230
Maximum supply voltage	V	230
Power supply frequency	Hz	50
Rated power	W	62
Power of electrical reheater	W	3300
Unit current	A	5.4
Maximum airflow	m <sup>3</sup> /h	430
Sound pressure level LpA at 3 m	dB(A)	31
Weight	kg	25
Filter	-	Coarse 90% / G4 (option ePM1 70% / F7)
Transported air temperature (max)	°C	40
Transported air temperature (min)	°C	-30
Ingress protection rating	-	IP22
Ingress protection rating of the drive	-	IP44





## Dimensions

D	H	L	L1	L2	W	W1	W2
200	350	850	903	972	400	514	313



## Accessories

### Other accessories




Name	Photo	Description
SF 334x287x48 G4		Panel filter G4
SF 334x287x48 F7		F7 panel filter

### Other accessories


Name	Photo	Description
<a href="#">VVG 200</a>		Flexible anti-vibration connector

### For round ducts



Name	Photo	Description
------	-------	-------------

<a href="#">SR 200/600</a>		Silencer is applied for noise absorption produced during the ventilating equipment operation and spread along the ducting systems
<a href="#">SR 200/900</a>		Silencer is applied for noise absorption produced during the ventilating equipment operation and spread along the ducting systems
<a href="#">SR 200/1200</a>		Silencer is applied for noise absorption produced during the ventilating equipment operation and spread along the ducting systems

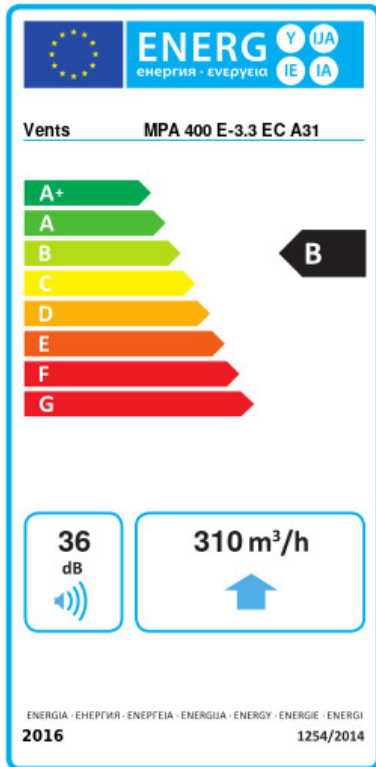
### For round ducts

Name	Photo	Description
<a href="#">KRV 200</a>		Air damper for air flow cut-off in round air ducts

### Electric actuators

Name	Photo	Description
<a href="#">Belimo TF230</a>		The actuators are designed for controlling air dampers with cross section up to 0.4 m <sup>2</sup> performing protection functions
<a href="#">Belimo TF24</a>		The actuators are designed for controlling air dampers with cross section up to 0.4 m <sup>2</sup> performing protection functions

## Ecodesign



Trademark	Vents					
Model	MPA 400 E-3.3 EC A31					
Specific energy consumption (SEC) (kWh/(m²/a))	Cold		Average		Warm	
	54	A+	26.9	B	11.4	E
Type of ventilation unit	Unidirectional					
Type of drive installed	Variable speed					
Type of heat recovery system	None					
Maximum flow rate (m³/h)	310					
Electric power input (W)	62					
Reference flow rate (m³/s)	0.061					
Reference pressure difference (Pa)	50					
Specific power input (SPI) (W/(m³/h))	0.105					
Control typology	Local demand control					
Maximum internal leakage rates (%)	2.7					
Maximum external leakage rates (%)	2.7					
Declared typology	RVU UVU					
Sound power level (dB(A))	36					
The annual electricity consumption (AEC) (kWh/a)	Cold		Average		Warm	
	55		55		55	
The annual heating saved (AHS) (kWh/a)	Cold		Average		Warm	
	5536		2830		1280	