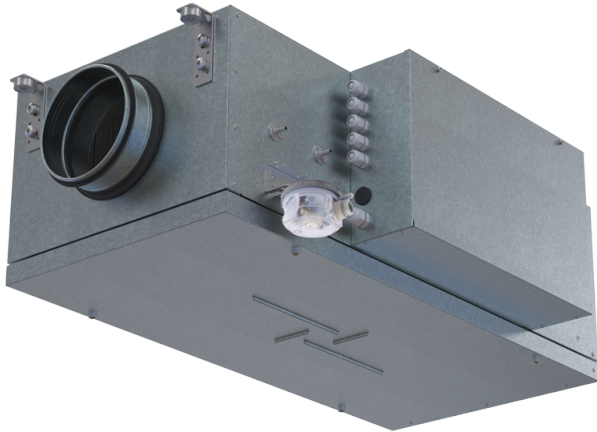


MPA 700 E-3.0 EC A31



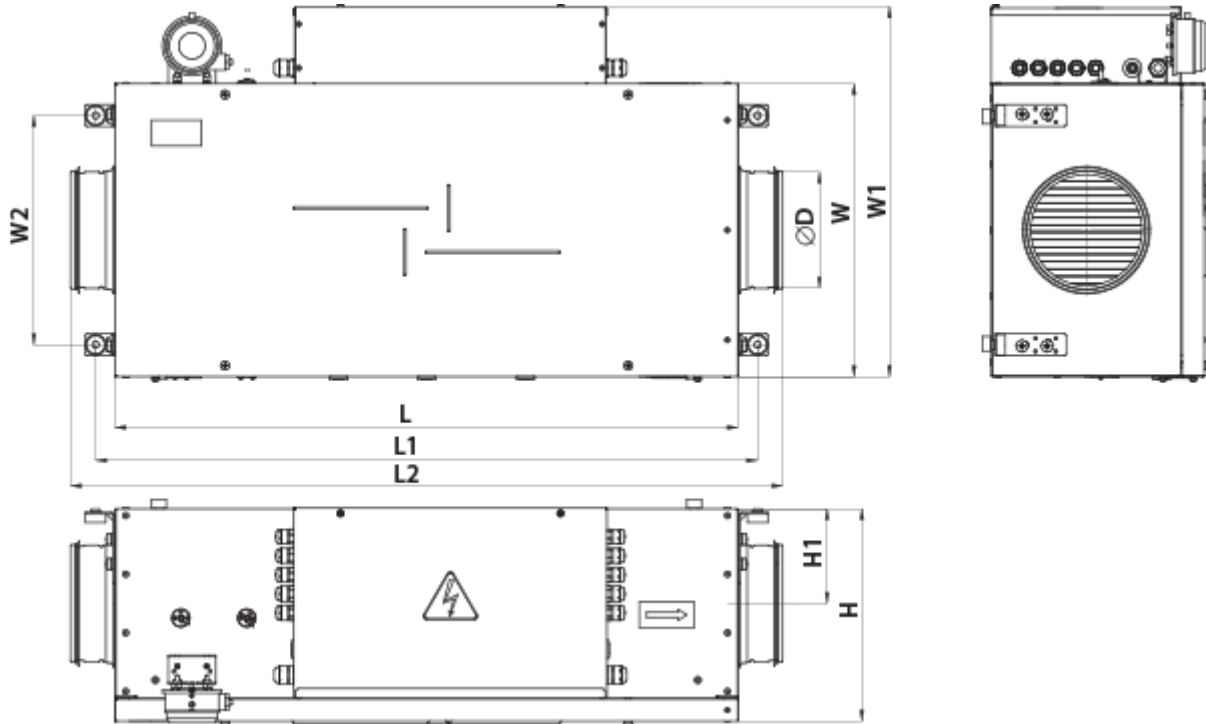
Air supply units in the sound- and heat-insulated casing

- Power of electrical reheater: 3000
- Maximum airflow: 760
- Sound pressure level LpA at 3 m: 41
- Filter: Coarse 90% / G4 (option ePM1 70% / F7)
- Sound insulation
- Motor type: EC
- Reheater: Electric
- BMS protocol: ModBus
- Control: Wired control panel
- Casing material: Aluzinc steel

	Unit of measurement	MPA 700 E-3.0 EC A31
Connected air duct size	mm	250
Minimum supply voltage	V	400
Maximum supply voltage	V	400
Power supply frequency	Hz	50
Rated power	W	116
Power of electrical reheater	W	3000
Unit current	A	5
Maximum airflow	m ³ /h	760
Sound pressure level LpA at 3 m	dB(A)	41
Weight	kg	27
Filter	-	Coarse 90% / G4 (option ePM1 70% / F7)
Transported air temperature (max)	°C	40
Transported air temperature (min)	°C	-30
Ingress protection rating	-	IP22
Ingress protection rating of the drive	-	IP44

Dimensions

D	H	L	L1	L2	W	W1	W2
250	350	850	903	972	460	565	353



Accessories

Other accessories




Name	Photo	Description
SF 384x287x48 G4		Panel filter G4
SF 384x287x48 F7		F7 panel filter

Other accessories

Name	Photo	Description
VVG 250		Flexible anti-vibration inserts for round ducts

For round ducts



Name	Photo	Description
------	-------	-------------

SR 250/600		Silencers made of galvanized steel filled with non-combustible sound-absorbing material
SR 250/900		Silencers made of galvanized steel filled with non-combustible sound-absorbing material
SR 250/1200		Silencers made of galvanized steel filled with non-combustible sound-absorbing material

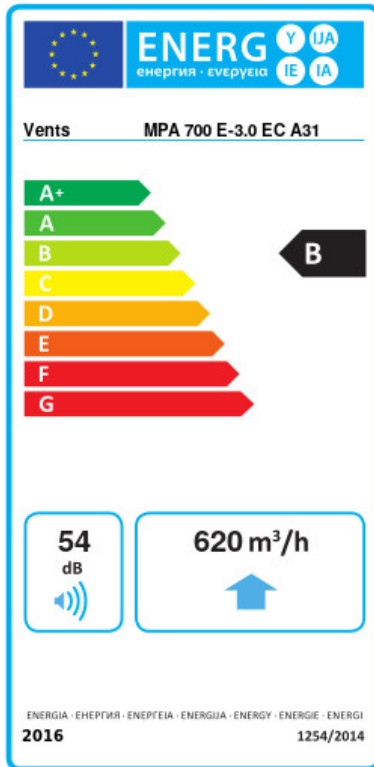
For round ducts

Name	Photo	Description
KRV 250		Air dampers for automatic air flow control in round ducts

Electric actuators

Name	Photo	Description
Belimo TF230		The actuators are designed for controlling air dampers with cross section up to 0.4 m ² performing protection functions
Belimo TF24		The actuators are designed for controlling air dampers with cross section up to 0.4 m ² performing protection functions

Ecodesign



Trademark	Vents					
Model	MPA 700 E-3.0 EC A31					
Specific energy consumption (SEC) (kWh/(m ² /a))	Cold		Average		Warm	
	53.9	A+	26.8	B	11.3	E
Type of ventilation unit	Unidirectional					
Type of drive installed	Variable speed					
Type of heat recovery system	None					
Maximum flow rate (m ³ /h)	620					
Electric power input (W)	116					
Reference flow rate (m ³ /s)	0.139					
Reference pressure difference (Pa)	50					
Specific power input (SPI) (W/(m ³ /h))	0.11					
Control typology	Local demand control					
Maximum internal leakage rates (%)	2.7					
Maximum external leakage rates (%)	2.7					
Declared typology	RVU UVU					
Sound power level (dB(A))	54					
The annual electricity consumption (AEC) (kWh/a)	Cold		Average		Warm	
	58		58		58	
The annual heating saved (AHS) (kWh/a)	Cold		Average		Warm	
	5536		2830		1280	