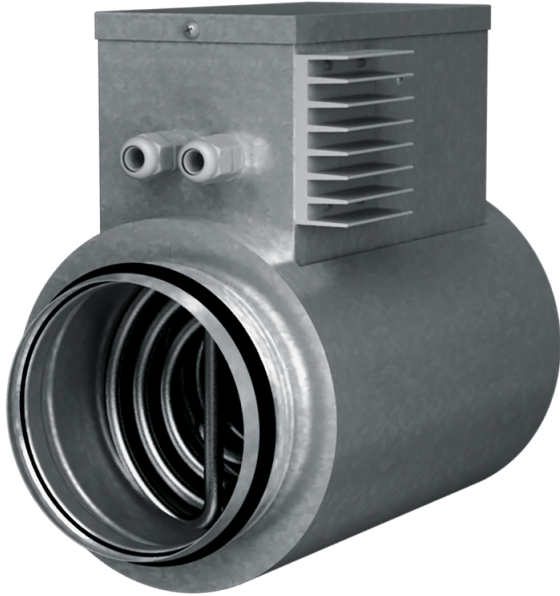


NKD 125-1,2-1 A21 V.2

Duct heater for supply air post-heating with external control

- Casing material: Galvanized steel



	Unit of measurement	NKD 125-1,2-1 A21 V.2
Connected air duct size	mm	125
Minimum supply voltage	V	230
Maximum supply voltage	V	230
Power supply frequency	Hz	50/60
Rated power	W	1200

Dimensions

Ø D	B	H	L	L1
125	164	249	306	192

