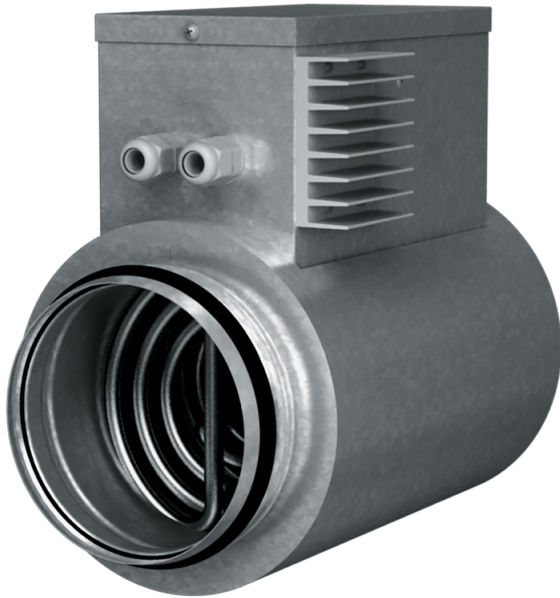


# NKP 150-1,2-1 A21 V.2

Inline heaters for heat exchanger frost protection

- Casing material: Galvanized steel



	Unit of measurement	NKP 150-1,2-1 A21 V.2
Connected air duct size	mm	150
Minimum supply voltage	V	230
Maximum supply voltage	V	230
Power supply frequency	Hz	50/60
Rated power	W	1200

## Dimensions

D	B	H	L	L1
150	189	280	306	192

