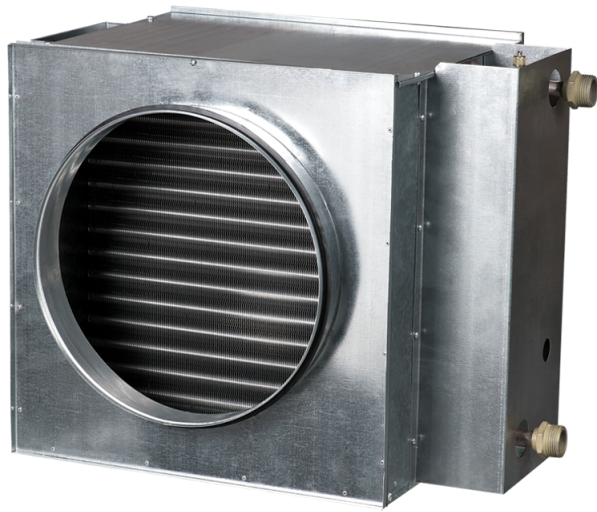


NKV 250-2



Duct water heaters are designed for heating of supply air in round ventilation systems. They can be also applied in supply or supply and exhaust ventilating units

- Casing material: Galvanized steel

	Unit of measurement	NKV 250-2
Connected air duct size	mm	250
Weight	kg	10.3

Dimensions

D	B	H	H3	L	L1	L2	L3	K
248	470	350	270	350	32	43	270	G 1"

