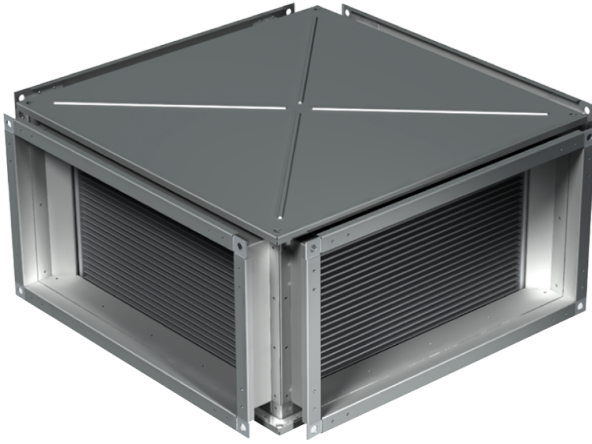


PR 1000x500

Plate heat exchanger with X-shaped air passage designed for exhaust air heat recovery in conditioning and ventilating systems

- Casing material: Galvanized steel



| | Unit of measurement | PR 1000x500 |
|--------|---------------------|-------------|
| Weight | kg | 78.3 |

Dimensions

| B | B1 | B2 | H | H1 | H2 | H3 | L |
|------|------|------|-----|-----|-----|-----|------|
| 1000 | 1020 | 1040 | 500 | 520 | 540 | 575 | 1130 |

