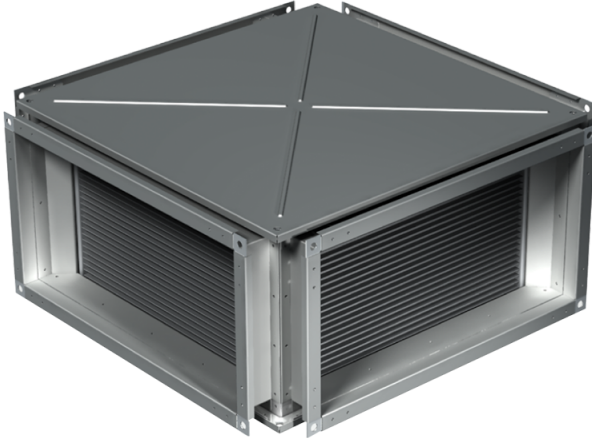


PR 1000x500

Plate heat exchanger with X-shaped air passage designed for exhaust air heat recovery in conditioning and ventilating systems

- Casing material: Galvanized steel



	Unit of measurement	PR 1000x500
Weight	kg	78.3

Dimensions

B	B1	B2	H	H1	H2	H3	L
1000	1020	1040	500	520	540	575	1130

