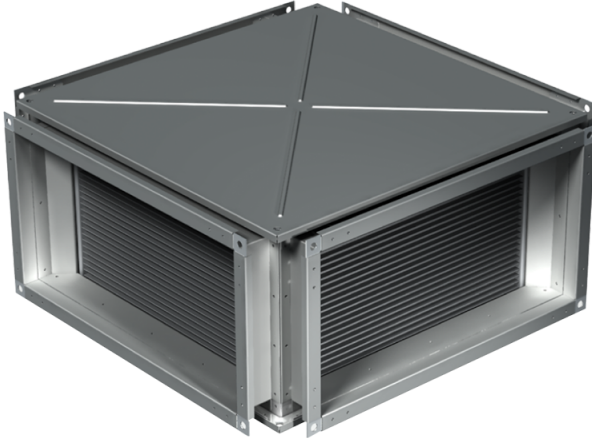


PR 500x250

Plate heat exchanger with X-shaped air passage designed for exhaust air heat recovery in conditioning and ventilating systems

- Casing material: Galvanized steel



	Unit of measurement	PR 500x250
Weight	kg	22.6

Dimensions

B	B1	B2	H	H1	H2	H3	L
500	520	540	250	270	290	325	630

